

RNASE8 Antibody (C-term)

Affinity Purified Rabbit Polyclonal Antibody (Pab)

Catalog # AP13463b

Product Information

Application	WB, E
Primary Accession	Q8TDE3
Other Accession	NP_612204.1
Reactivity	Human
Host	Rabbit
Clonality	Polyclonal
Isotype	Rabbit IgG
Clone Names	RB33206
Calculated MW	17041
Antigen Region	104-132

Additional Information

Gene ID	122665
Other Names	Ribonuclease 8, RNase 8, 3127-, RNASE8
Target/Specificity	This RNASE8 antibody is generated from rabbits immunized with a KLH conjugated synthetic peptide between 104-132 amino acids from the C-terminal region of human RNASE8.
Dilution	WB~~1:1000 E~~Use at an assay dependent concentration.
Format	Purified polyclonal antibody supplied in PBS with 0.09% (W/V) sodium azide. This antibody is purified through a protein A column, followed by peptide affinity purification.
Storage	Maintain refrigerated at 2-8°C for up to 2 weeks. For long term storage store at -20°C in small aliquots to prevent freeze-thaw cycles.
Precautions	RNASE8 Antibody (C-term) is for research use only and not for use in diagnostic or therapeutic procedures.

Protein Information

Name	RNASE8
Function	Has a low ribonuclease activity.
Cellular Location	Secreted.

Tissue Location

Expressed prominently in the placenta and is not detected in any other tissues examined

Background

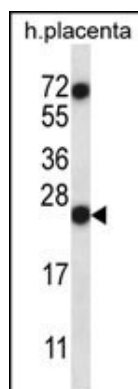
RNASE8 has a low ribonuclease activity.

References

Zhang, J. Mol. Biol. Evol. 24(2):505-512(2007)

Zhang, J., et al. Nucleic Acids Res. 30(5):1169-1175(2002)

Images



RNASE8 Antibody (C-term) (Cat. #AP13463b) western blot analysis in human placenta tissue lysates (35ug/lane). This demonstrates the RNASE8 antibody detected the RNASE8 protein (arrow).

Please note: All products are 'FOR RESEARCH USE ONLY. NOT FOR USE IN DIAGNOSTIC OR THERAPEUTIC PROCEDURES'.