

# TLE6 Antibody (N-term )

Affinity Purified Rabbit Polyclonal Antibody (Pab)

Catalog # AP13485a

## Product Information

---

Application	WB, IHC-P, E
Primary Accession	<a href="#">Q9H808</a>
Other Accession	<a href="#">NP_079036.1</a> , <a href="#">NP_001137458.1</a>
Reactivity	Human
Host	Rabbit
Clonality	Polyclonal
Isotype	Rabbit IgG
Clone Names	RB33374
Calculated MW	63473
Antigen Region	30-58

## Additional Information

---

Gene ID	79816
Other Names	Transducin-like enhancer protein 6, TLE6
Target/Specificity	This TLE6 antibody is generated from rabbits immunized with a KLH conjugated synthetic peptide between 30-58 amino acids from the N-terminal region of human TLE6.
Dilution	WB~~1:1000 IHC-P~~1:100~500 E~~Use at an assay dependent concentration.
Format	Purified polyclonal antibody supplied in PBS with 0.09% (W/V) sodium azide. This antibody is purified through a protein A column, followed by peptide affinity purification.
Storage	Maintain refrigerated at 2-8°C for up to 2 weeks. For long term storage store at -20°C in small aliquots to prevent freeze-thaw cycles.
Precautions	TLE6 Antibody (N-term ) is for research use only and not for use in diagnostic or therapeutic procedures.

## Protein Information

---

Name	TLE6 {ECO:0000303   PubMed:26537248, ECO:0000312   HGNC:HGNC:30788}
Function	Component of the subcortical maternal complex (SCMC), a multiprotein complex that plays a key role in early embryonic development (PubMed: <a href="#">26537248</a> ). The SCMC complex is a structural constituent of cytoplasmic lattices, which consist in fibrous structures found in the

cytoplasm of oocytes and preimplantation embryos (By similarity). They are required to store maternal proteins critical for embryonic development, such as proteins that control epigenetic reprogramming of the preimplantation embryo, and prevent their degradation or activation (By similarity). Also required for spermatogenesis: regulates spermatogonia proliferation and cell cycle progression, potentially via regulation of cell cycle regulatory genes such as; CEBPB, CEBPA, CSF3, PCNA, and CDK4 (By similarity). Suppresses FOXG1/BF-1-mediated transcriptional repression by inhibiting interaction of the transcriptional corepressor TLE1 with FOXG1 which promotes cortical neuron differentiation (By similarity). Acts as a transcriptional corepressor of NFATC1-mediated gene expression by contributing to PAX6-mediated repression (By similarity).

#### Cellular Location

Cytoplasm. Nucleus {ECO:0000250|UniProtKB:Q9WVB3}. Note=Core component of cytoplasmic lattices in oocytes. [Isoform 2]: Cytoplasm

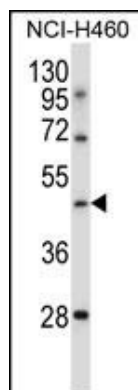
## Background

As a member of the subcortical maternal complex (SCMC), plays an essential role for zygotes to progress beyond the first embryonic cell divisions (By similarity).

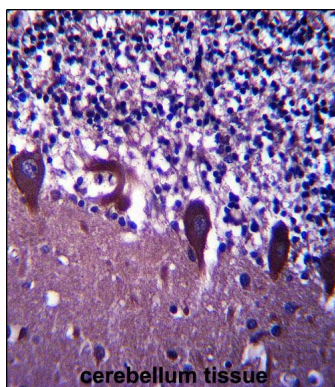
## References

Chen, P.C., et al. PLoS Genet. 4 (6), E1000092 (2008) :  
Dang, J., et al. Mol. Cell. Biol. 21(17):5935-5945(2001)

## Images



TLE6 Antibody (N-term ) (Cat. #AP13485a) western blot analysis in NCI-H460 cell line lysates (35ug/lane). This demonstrates the TLE6 antibody detected the TLE6 protein (arrow).



TLE6 Antibody (N-term) (Cat. #AP13485a) immunohistochemistry analysis in formalin fixed and paraffin embedded human cerebellum tissue followed by peroxidase conjugation of the secondary antibody and DAB staining. This data demonstrates the use of TLE6 Antibody (N-term) for immunohistochemistry. Clinical relevance has not been evaluated.