

# SIDT1 Antibody (Center)

Affinity Purified Rabbit Polyclonal Antibody (Pab)

Catalog # AP13510c

## Product Information

---

<b>Application</b>	WB, E
<b>Primary Accession</b>	<a href="#">Q9NXL6</a>
<b>Other Accession</b>	<a href="#">Q6Q3F5</a> , <a href="#">Q6AXF6</a> , <a href="#">NP_060169.2</a>
<b>Reactivity</b>	Human
<b>Predicted</b>	Mouse, Rat
<b>Host</b>	Rabbit
<b>Clonality</b>	Polyclonal
<b>Isotype</b>	Rabbit IgG
<b>Calculated MW</b>	93839
<b>Antigen Region</b>	412-441

## Additional Information

---

<b>Gene ID</b>	54847
<b>Other Names</b>	SID1 transmembrane family member 1, SIDT1
<b>Target/Specificity</b>	This SIDT1 antibody is generated from rabbits immunized with a KLH conjugated synthetic peptide between 412-441 amino acids from the Central region of human SIDT1.
<b>Dilution</b>	WB~~1:1000 E~~Use at an assay dependent concentration.
<b>Format</b>	Purified polyclonal antibody supplied in PBS with 0.09% (W/V) sodium azide. This antibody is purified through a protein A column, followed by peptide affinity purification.
<b>Storage</b>	Maintain refrigerated at 2-8°C for up to 2 weeks. For long term storage store at -20°C in small aliquots to prevent freeze-thaw cycles.
<b>Precautions</b>	SIDT1 Antibody (Center) is for research use only and not for use in diagnostic or therapeutic procedures.

## Protein Information

---

<b>Name</b>	SIDT1
<b>Function</b>	In vitro binds long double-stranded RNA (dsRNA) (500 and 700 base pairs), but not dsRNA shorter than 300 bp. Not involved in RNA autophagy, a process in which RNA is directly imported into lysosomes in an ATP-dependent manner, and degraded.

**Cellular Location**

Membrane; Multi-pass membrane protein

**Background**

---

SIDT1 belongs to the SID1 family.

**References**

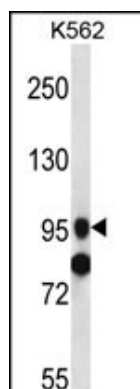
---

Rose, J.E., et al. Mol. Med. 16 (7-8), 247-253 (2010) :

Duxbury, M.S., et al. Biochem. Biophys. Res. Commun. 331(2):459-463(2005)

**Images**

---



SIDT1 Antibody (Center) (Cat. #AP13510c) western blot analysis in K562 cell line lysates (35ug/lane). This demonstrates the SIDT1 antibody detected the SIDT1 protein (arrow).

Please note: All products are 'FOR RESEARCH USE ONLY. NOT FOR USE IN DIAGNOSTIC OR THERAPEUTIC PROCEDURES'.