

BAIAP2L2 Antibody (N-term)

Affinity Purified Rabbit Polyclonal Antibody (Pab)

Catalog # AP13513a

Product Information

Application	WB, E
Primary Accession	Q6UXY1
Other Accession	NP_079321.3
Reactivity	Human
Host	Rabbit
Clonality	Polyclonal
Isotype	Rabbit IgG
Clone Names	RB33511
Calculated MW	58987
Antigen Region	99-127

Additional Information

Gene ID	80115
Other Names	Brain-specific angiogenesis inhibitor 1-associated protein 2-like protein 2, BAI1-associated protein 2-like protein 2, Planar intestinal- and kidney-specific BAR domain protein, Pinkbar, BAIAP2L2
Target/Specificity	This BAIAP2L2 antibody is generated from rabbits immunized with a KLH conjugated synthetic peptide between 99-127 amino acids from the N-terminal region of human BAIAP2L2.
Dilution	WB~~1:1000 E~~Use at an assay dependent concentration.
Format	Purified polyclonal antibody supplied in PBS with 0.09% (W/V) sodium azide. This antibody is purified through a protein A column, followed by peptide affinity purification.
Storage	Maintain refrigerated at 2-8°C for up to 2 weeks. For long term storage store at -20°C in small aliquots to prevent freeze-thaw cycles.
Precautions	BAIAP2L2 Antibody (N-term) is for research use only and not for use in diagnostic or therapeutic procedures.

Protein Information

Name	BAIAP2L2
Function	Phosphoinositides-binding protein that induces the formation of planar or gently curved membrane structures. Binds to phosphoinositides, including to

phosphatidylinositol 4,5-bisphosphate (PtdIns(4,5)P₂) headgroups. There seems to be no clear preference for a specific phosphoinositide (By similarity).

Cellular Location

Cell membrane; Peripheral membrane protein. Cell junction. Cytoplasmic vesicle membrane. Note=Localizes to RAB13-positive vesicles and to the plasma membrane at intercellular contacts

Tissue Location

Expressed in the epithelial layer of the intestine (at protein level).

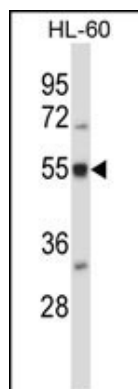
Background

BAIAP2L2 may function as an adapter protein (Potential).

References

Clark, H.F., et al. Genome Res. 13(10):2265-2270(2003)
Dunham, I., et al. Nature 402(6761):489-495(1999)

Images



BAIAP2L2 Antibody (N-term) (Cat. #AP13513a) western blot analysis in HL-60 cell line lysates (35ug/lane). This demonstrates the BAIAP2L2 antibody detected the BAIAP2L2 protein (arrow).

Please note: All products are 'FOR RESEARCH USE ONLY. NOT FOR USE IN DIAGNOSTIC OR THERAPEUTIC PROCEDURES'.