

CASS4 Antibody (C-term)

Affinity Purified Rabbit Polyclonal Antibody (Pab)

Catalog # AP13515b

Product Information

Application	WB, E
Primary Accession	Q9NQ75
Other Accession	NP_001157588.1 , NP_001157587.1 , NP_001157586.1 , NP_065089.2
Reactivity	Human
Host	Rabbit
Clonality	Polyclonal
Isotype	Rabbit IgG
Clone Names	RB33516
Calculated MW	87144
Antigen Region	610-639

Additional Information

Gene ID	57091
Other Names	Cas scaffolding protein family member 4, HEF-like protein, HEF1-EFS-p130Cas-like protein, HEPL, CASS4, C20orf32, HEFL
Target/Specificity	This CASS4 antibody is generated from rabbits immunized with a KLH conjugated synthetic peptide between 610-639 amino acids from the C-terminal region of human CASS4.
Dilution	WB~~1:1000 E~~Use at an assay dependent concentration.
Format	Purified polyclonal antibody supplied in PBS with 0.09% (W/V) sodium azide. This antibody is purified through a protein A column, followed by peptide affinity purification.
Storage	Maintain refrigerated at 2-8°C for up to 2 weeks. For long term storage store at -20°C in small aliquots to prevent freeze-thaw cycles.
Precautions	CASS4 Antibody (C-term) is for research use only and not for use in diagnostic or therapeutic procedures.

Protein Information

Name	CASS4
Synonyms	C20orf32, HEFL
Function	Docking protein that plays a role in tyrosine kinase-based signaling related

to cell adhesion and cell spreading. Regulates PTK2/FAK1 activity, focal adhesion integrity, and cell spreading.

Cellular Location

Cytoplasm, cytoskeleton. Cell junction, focal adhesion

Tissue Location

Expressed abundantly in lung and spleen. Also highly expressed in ovarian and leukemia cell lines

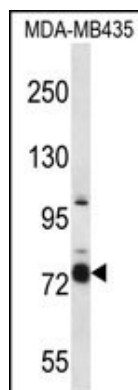
Background

Possible docking protein which may play a role for tyrosine-kinase-based signaling related to cell adhesion. Regulates FAK activity, focal adhesion integrity, and cell spreading.

References

Singh, M.K., et al. Mol. Biol. Cell 19(4):1627-1636(2008)
Rikova, K., et al. Cell 131(6):1190-1203(2007)
Deloukas, P., et al. Nature 414(6866):865-871(2001)

Images



CASS4 Antibody (C-term) (Cat. #AP13515b) western blot analysis in MDA-MB435 cell line lysates (35ug/lane). This demonstrates the CASS4 antibody detected the CASS4 protein (arrow).

Please note: All products are 'FOR RESEARCH USE ONLY. NOT FOR USE IN DIAGNOSTIC OR THERAPEUTIC PROCEDURES'.