

CTAG1A Antibody (N-term)

Affinity Purified Rabbit Polyclonal Antibody (Pab)

Catalog # AP13527a

Product Information

Application	WB, IHC-P, E
Primary Accession	P78358
Other Accession	NP_640343.1 , NP_001318.1
Reactivity	Human
Host	Rabbit
Clonality	Polyclonal
Isotype	Rabbit IgG
Clone Names	RB33576
Calculated MW	17992
Antigen Region	1-30

Additional Information

Gene ID	1485;246100
Other Names	Cancer/testis antigen 1, Autoimmunogenic cancer/testis antigen NY-ESO-1, Cancer/testis antigen 61, CT61, L antigen family member 2, LAGE-2, CTAG1A, CTAG, CTAG1, ESO1, LAGE2, LAGE2A
Target/Specificity	This CTAG1A antibody is generated from rabbits immunized with a KLH conjugated synthetic peptide between 1-30 amino acids from the N-terminal region of human CTAG1A.
Dilution	WB~~1:1000 IHC-P~~1:100~500 E~~Use at an assay dependent concentration.
Format	Purified polyclonal antibody supplied in PBS with 0.09% (W/V) sodium azide. This antibody is purified through a protein A column, followed by peptide affinity purification.
Storage	Maintain refrigerated at 2-8°C for up to 2 weeks. For long term storage store at -20°C in small aliquots to prevent freeze-thaw cycles.
Precautions	CTAG1A Antibody (N-term) is for research use only and not for use in diagnostic or therapeutic procedures.

Protein Information

Name	CTAG1A
Synonyms	CTAG, CTAG1, ESO1, LAGE2, LAGE2A

Cellular Location

Cytoplasm

Tissue Location

Expressed in testis and ovary and in a wide variety of cancers. Detected in uterine myometrium. Expressed from 18 weeks until birth in human fetal testis. In the adult testis, is strongly expressed in spermatogonia and in primary spermatocytes, but not in post-meiotic cells or in testicular somatic cells (at protein level)

Background

CTAG1A is an identical copy of the CTAG1B gene (MIM 300156) (Aradhya et al., 2001 [PubMed 11709543]).[supplied by OMIM].

References

Yoshida, N., et al. Int. J. Oncol. 28(5):1089-1098(2006)

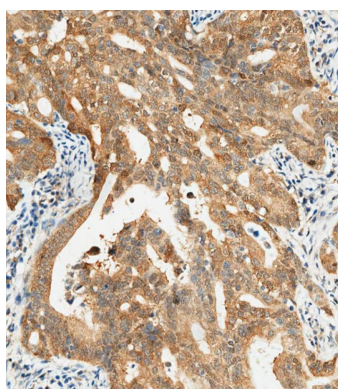
Cho, H.J., et al. Cancer Immun. 6, 12 (2006) :

Ross, M.T., et al. Nature 434(7031):325-337(2005)

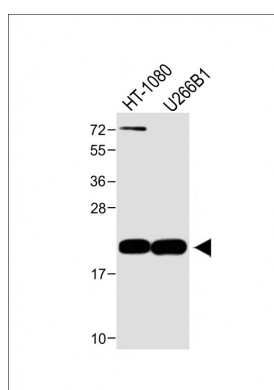
Scanlan, M.J., et al. Immunol. Rev. 188, 22-32 (2002) :

Satie, A.P., et al. Lab. Invest. 82(6):775-780(2002)

Images



AP13527a staining CTAG1A in human gastric carcinoma tissue sections by Immunohistochemistry (IHC-P - paraformaldehyde-fixed, paraffin-embedded sections). Samples were incubated with primary antibody (1/250) for 1 hours at room temperature. A undiluted biotinylated goat polyvalent antibody was used as the secondary antibody.



All lanes : Anti-CTAG1A Antibody (N-term) at 1:1000 dilution Lane 1: HT-1080 whole cell lysate Lane 2: U266B1 whole cell lysate Lysates/proteins at 20 µg per lane. Secondary Goat Anti-Rabbit IgG, (H+L), Peroxidase conjugated at 1/10000 dilution. Predicted band size : 18 kDa Blocking/Dilution buffer: 5% NFDM/TBST.

Please note: All products are 'FOR RESEARCH USE ONLY. NOT FOR USE IN DIAGNOSTIC OR THERAPEUTIC PROCEDURES'.