

# ACTG2 Antibody (C-term)

Affinity Purified Rabbit Polyclonal Antibody (Pab)

Catalog # AP13537b

## Product Information

---

<b>Application</b>	WB, IHC-P, E
<b>Primary Accession</b>	<a href="#">P63267</a>
<b>Other Accession</b>	<a href="#">P63269</a> , <a href="#">P63268</a> , <a href="#">P63270</a> , <a href="#">Q5E9B5</a> , <a href="#">NP_001606.1</a>
<b>Reactivity</b>	Human
<b>Predicted</b>	Bovine, Chicken, Mouse, Rat
<b>Host</b>	Rabbit
<b>Clonality</b>	Polyclonal
<b>Isotype</b>	Rabbit IgG
<b>Clone Names</b>	RB33618
<b>Calculated MW</b>	41877
<b>Antigen Region</b>	343-371

## Additional Information

---

<b>Gene ID</b>	72
<b>Other Names</b>	Actin, gamma-enteric smooth muscle, Alpha-actin-3, Gamma-2-actin, Smooth muscle gamma-actin, ACTG2, ACTA3, ACTL3, ACTSG
<b>Target/Specificity</b>	This ACTG2 antibody is generated from rabbits immunized with a KLH conjugated synthetic peptide between 343-371 amino acids from the C-terminal region of human ACTG2.
<b>Dilution</b>	WB~~1:1000 IHC-P~~1:100~500 E~~Use at an assay dependent concentration.
<b>Format</b>	Purified polyclonal antibody supplied in PBS with 0.05% (V/V) Proclin 300. This antibody is prepared by Saturated Ammonium Sulfate (SAS) precipitation followed by dialysis against PBS.
<b>Storage</b>	Maintain refrigerated at 2-8°C for up to 2 weeks. For long term storage store at -20°C in small aliquots to prevent freeze-thaw cycles.
<b>Precautions</b>	ACTG2 Antibody (C-term) is for research use only and not for use in diagnostic or therapeutic procedures.

## Protein Information

---

<b>Name</b>	ACTG2
<b>Synonyms</b>	ACTA3, ACTL3, ACTSG

<b>Function</b>	Actins are highly conserved proteins that are involved in various types of cell motility and are ubiquitously expressed in all eukaryotic cells.
<b>Cellular Location</b>	Cytoplasm, cytoskeleton.
<b>Tissue Location</b>	In the intestine, abundantly expressed in smooth muscle cells of muscularis mucosa and muscularis propria. Also detected in intestinal vascular smooth muscle cells

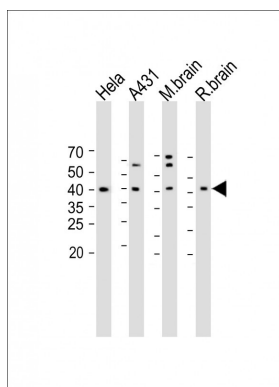
## Background

Actins are highly conserved proteins that are involved in various types of cell motility, and maintenance of the cytoskeleton. In vertebrates, three main groups of actin isoforms, alpha, beta and gamma have been identified. The alpha actins are found in muscle tissues and are a major constituent of the contractile apparatus. The beta and gamma actins co-exist in most cell types as components of the cytoskeleton, and as mediators of internal cell motility. Actin, gamma 2, encoded by this gene, is a smooth muscle actin found in enteric tissues.

## References

Sun, Q., et al. J. Biol. Chem. 284(47):32582-32590(2009)  
Laasanen, J., et al. Fetal. Diagn. Ther. 23(1):36-40(2008)  
Goldberg, M.T., et al. J. Invest. Dermatol. 127(11):2645-2655(2007)  
Yonemoto, S., et al. Clin. Exp. Nephrol. 10(3):186-192(2006)  
Chang, K.W., et al. Hepatol. Res. 36(1):33-39(2006)

## Images



All lanes : Anti-ACTG2 Antibody (C-term)at 1:2000 dilution  
Lane 1:HeLa whole cel lysate Lane 2: A431 whole cel lysate  
Lane 3: Mouse brain lysate Lane 4:Rat brain lysate  
Lysates/proteins at 20 µg per lane. Secondary Goat  
Anti-Rabbit IgG, (H+L), Peroxidase conjugated (ASP1615)  
at 1/15000 dilution. Observed band size : 42kDa  
Blocking/Dilution buffer: 5% NFDM/TBST.

Please note: All products are 'FOR RESEARCH USE ONLY. NOT FOR USE IN DIAGNOSTIC OR THERAPEUTIC PROCEDURES'.