

RNASE3 Antibody (C-term)

Affinity Purified Rabbit Polyclonal Antibody (Pab)

Catalog # AP13557b

Product Information

Application	WB, IF, E
Primary Accession	P12724
Other Accession	NP_002926.2
Reactivity	Human
Host	Rabbit
Clonality	Polyclonal
Isotype	Rabbit IgG
Clone Names	RB30251
Calculated MW	18385
Antigen Region	124-151

Additional Information

Gene ID	6037
Other Names	Eosinophil cationic protein, ECP, 3127-, Ribonuclease 3, RNase 3, RNASE3, ECP, RNS3
Target/Specificity	This RNASE3 antibody is generated from rabbits immunized with a KLH conjugated synthetic peptide between 124-151 amino acids of human RNASE3.
Dilution	WB~~1:1000 IF~~1:10~50 E~~Use at an assay dependent concentration.
Format	Purified polyclonal antibody supplied in PBS with 0.09% (W/V) sodium azide. This antibody is purified through a protein A column, followed by peptide affinity purification.
Storage	Maintain refrigerated at 2-8°C for up to 2 weeks. For long term storage store at -20°C in small aliquots to prevent freeze-thaw cycles.
Precautions	RNASE3 Antibody (C-term) is for research use only and not for use in diagnostic or therapeutic procedures.

Protein Information

Name	RNASE3
Synonyms	ECP, RNS3
Function	Cytotoxin and helminthotoxin with low-efficiency ribonuclease activity.

Possesses a wide variety of biological activities. Exhibits antibacterial activity, including cytoplasmic membrane depolarization of preferentially Gram-negative, but also Gram-positive strains. Promotes E.coli outer membrane detachment, alteration of the overall cell shape and partial loss of cell content.

Cellular Location

Secreted. Note=Located in the matrix of eosinophil large specific granule, which are released following activation by an immune stimulus

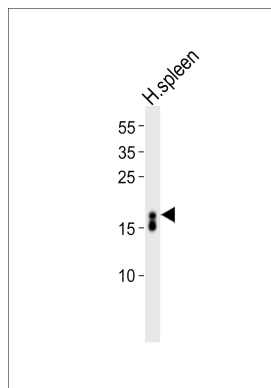
Background

Cytotoxin and helminthotoxin with low-efficiency ribonuclease activity. Possesses a wide variety of biological activities. Exhibits antibacterial activity.

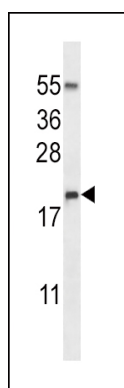
References

Peona, V., et al. J Asthma 47(2):131-134(2010)
Kang, I., et al. Eur Arch Otorhinolaryngol 267(3):391-395(2010)
Jonsson, U.B., et al. BMC Pulm Med 10, 36 (2010) :
Kato, M., et al. Int. Arch. Allergy Immunol. 152 SUPPL 1, 62-66 (2010) :
Chang, K.C., et al. BMC Cell Biol. 11, 6 (2010) :

Images

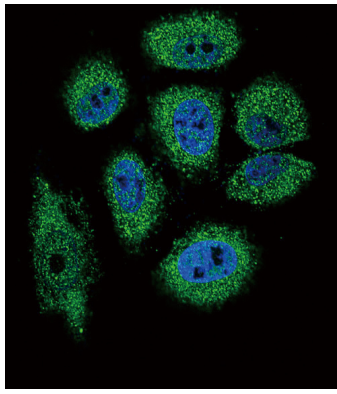


Western blot analysis of lysate from human spleen tissue lysate, using RNASE3 Antibody (C-term)(Cat. #AP13557b). AP13557b was diluted at 1:1000. A goat anti-rabbit IgG H&L(HRP) at 1:10000 dilution was used as the secondary antibody. Lysate at 35ug.



RNASE3 Antibody (C-term) (Cat. #AP13557b) western blot analysis in NCI-H460 cell line lysates (35ug/lane). This demonstrates the RNASE3 antibody detected the RNASE3 protein (arrow).

Confocal immunofluorescent analysis of RNASE3 Antibody (C-term) (Cat#AP13557b) with NCI-H460 cell followed by Alexa Fluor 488-conjugated goat anti-rabbit IgG (green). DAPI was used to stain the cell nuclear (blue).



Please note: All products are 'FOR RESEARCH USE ONLY. NOT FOR USE IN DIAGNOSTIC OR THERAPEUTIC PROCEDURES'.