

GRINA Antibody (Center)

Affinity Purified Rabbit Polyclonal Antibody (Pab)

Catalog # AP13558c

Product Information

Application	WB, IHC-P, E
Primary Accession	Q7Z429
Other Accession	Q32L53 , NP_000828.1 , NP_001009184.1
Reactivity	Human
Predicted	Bovine
Host	Rabbit
Clonality	Polyclonal
Isotype	Rabbit IgG
Clone Names	RB30259
Calculated MW	41203
Antigen Region	131-158

Additional Information

Gene ID	2907
Other Names	Protein lifeguard 1, Glutamate [NMDA] receptor-associated protein 1, NMDA receptor glutamate-binding subunit, Putative MAPK-activating protein PM02, Transmembrane BAX inhibitor motif-containing protein 3, GRINA, LFG1, NMDARA1, TMBIM3
Target/Specificity	This GRINA antibody is generated from rabbits immunized with a KLH conjugated synthetic peptide between 131-158 amino acids from the Central region of human GRINA.
Dilution	WB~~1:1000 IHC-P~~1:100~500 E~~Use at an assay dependent concentration.
Format	Purified polyclonal antibody supplied in PBS with 0.09% (W/V) sodium azide. This antibody is purified through a protein A column, followed by peptide affinity purification.
Storage	Maintain refrigerated at 2-8°C for up to 2 weeks. For long term storage store at -20°C in small aliquots to prevent freeze-thaw cycles.
Precautions	GRINA Antibody (Center) is for research use only and not for use in diagnostic or therapeutic procedures.

Protein Information

Name	GRINA
-------------	-------

Synonyms	LFG1, NMDARA1, TMBIM3
Function	Potential apoptotic regulator.
Cellular Location	Membrane; Multi-pass membrane protein

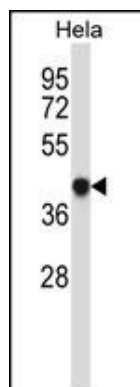
Background

The function of this protein remains unknown.

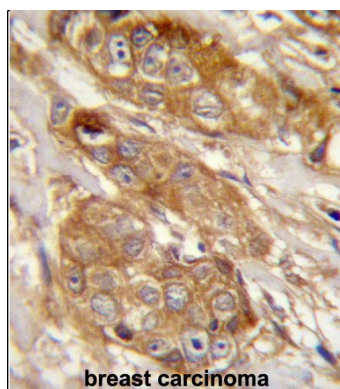
References

Zhou, J., et al. Comput Biol Chem 32(3):159-162(2008)
 Oh, J.H., et al. Mamm. Genome 16(12):942-954(2005)
 Matsuda, A., et al. Oncogene 22(21):3307-3318(2003)
 Lewis, T.B., et al. Genomics 32(1):131-133(1996)
 Collins, C., et al. Genomics 17(1):237-239(1993)

Images



GRINA Antibody (Center) (Cat. #AP13558c) western blot analysis in HeLa cell line lysates (35ug/lane). This demonstrates the GRINA antibody detected the GRINA protein (arrow).



GRINA Antibody (Center) (Cat. #AP13558c) immunohistochemistry analysis in formalin fixed and paraffin embedded human breast carcinoma followed by peroxidase conjugation of the secondary antibody and DAB staining. This data demonstrates the use of GRINA Antibody (Center) for immunohistochemistry. Clinical relevance has not been evaluated.

Citations

- [Glutamate receptor, ionotropic, N-methyl D-aspartate associated protein 1 promotes colorectal cancer cell proliferation and metastasis, and is negatively regulated by miR-1296-3p](#)
- [Transmembrane protein GRINA modulates aerobic glycolysis and promotes tumor progression in gastric cancer](#)