

STMN4 Antibody (N-term)

Affinity Purified Rabbit Polyclonal Antibody (Pab)

Catalog # AP13574a

Product Information

Application	WB, E
Primary Accession	Q9H169
Other Accession	NP_110422.2
Reactivity	Human
Host	Rabbit
Clonality	Polyclonal
Isotype	Rabbit IgG
Clone Names	RB32634
Calculated MW	22071
Antigen Region	34-63

Additional Information

Gene ID	81551
Other Names	Stathmin-4, Stathmin-like protein B3, RB3, STMN4
Target/Specificity	This STMN4 antibody is generated from rabbits immunized with a KLH conjugated synthetic peptide between 34-63 amino acids from the N-terminal region of human STMN4.
Dilution	WB~~1:1000 E~~Use at an assay dependent concentration.
Format	Purified polyclonal antibody supplied in PBS with 0.09% (W/V) sodium azide. This antibody is purified through a protein A column, followed by peptide affinity purification.
Storage	Maintain refrigerated at 2-8°C for up to 2 weeks. For long term storage store at -20°C in small aliquots to prevent freeze-thaw cycles.
Precautions	STMN4 Antibody (N-term) is for research use only and not for use in diagnostic or therapeutic procedures.

Protein Information

Name	STMN4
Function	Exhibits microtubule-destabilizing activity.
Cellular Location	Golgi apparatus. Cell projection, growth cone. Cell projection, axon

Background

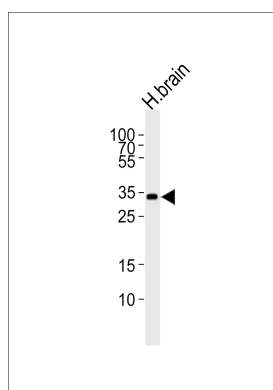
The function of this protein remains unknown.

References

Bieche, I., et al. Genomics 81(4):400-410(2003)

Gavet, O., et al. J. Cell. Sci. 111 (PT 22), 3333-3346 (1998) :

Images



Western blot analysis of lysate from human brain tissue lysate, using STMN4 Antibody (N-term)(Cat. #AP13574a). AP13574a was diluted at 1:1000 at each lane. A goat anti-rabbit IgG H&L(HRP) at 1:5000 dilution was used as the secondary antibody. Lysate at 35ug per lane.

Please note: All products are 'FOR RESEARCH USE ONLY. NOT FOR USE IN DIAGNOSTIC OR THERAPEUTIC PROCEDURES'.