

RHBDF2 Antibody (N-term)

Affinity Purified Rabbit Polyclonal Antibody (Pab)

Catalog # AP13588A

Product Information

Application	WB, IHC-P, E
Primary Accession	Q6PJF5
Other Accession	NP_001005498.2 , NP_078875.4
Reactivity	Human, Mouse
Host	Rabbit
Clonality	Polyclonal
Isotype	Rabbit IgG
Clone Names	RB32834
Calculated MW	96686
Antigen Region	80-109

Additional Information

Gene ID	79651
Other Names	Inactive rhomboid protein 2, iRhom2, Rhomboid 5 homolog 2, Rhomboid family member 2, Rhomboid veinlet-like protein 5, Rhomboid veinlet-like protein 6, RHBDF2, IRHOM2, RHBDL5, RHBDL6
Target/Specificity	This RHBDF2 antibody is generated from rabbits immunized with a KLH conjugated synthetic peptide between 80-109 amino acids from the N-terminal region of human RHBDF2.
Dilution	WB~~1:1000 IHC-P~~1:100~500 E~~Use at an assay dependent concentration.
Format	Purified polyclonal antibody supplied in PBS with 0.09% (W/V) sodium azide. This antibody is purified through a protein A column, followed by peptide affinity purification.
Storage	Maintain refrigerated at 2-8°C for up to 2 weeks. For long term storage store at -20°C in small aliquots to prevent freeze-thaw cycles.
Precautions	RHBDF2 Antibody (N-term) is for research use only and not for use in diagnostic or therapeutic procedures.

Protein Information

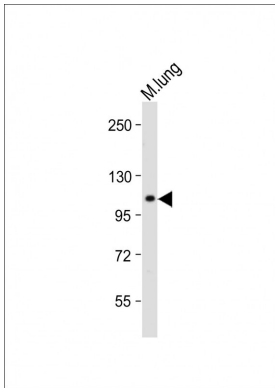
Name	RHBDF2
Synonyms	IRHOM2, RHBDL5, RHBDL6

Function	Regulates ADAM17 protease, a sheddase of the epidermal growth factor (EGF) receptor ligands and TNF, thereby plays a role in sleep, cell survival, proliferation, migration and inflammation. Does not exhibit any protease activity on its own.
Cellular Location	Endoplasmic reticulum membrane {ECO:0000250 UniProtKB:Q80WQ6}; Multi-pass membrane protein {ECO:0000250 UniProtKB:Q80WQ6}. Cell membrane
Tissue Location	Found in the epidermis and esophageal epithelium.

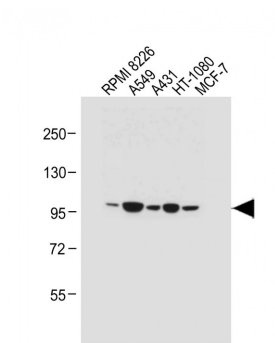
Background

Not expected to have protease activity (By similarity).

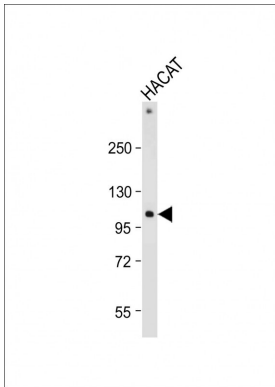
Images



Anti-RHBDF2 Antibody (N-term) at 1:2000 dilution + Mouse lung tissue lysate Lysates/proteins at 20 µg per lane. Secondary Goat Anti-Rabbit IgG, (H+L), Peroxidase conjugated at 1/10000 dilution. Predicted band size : 97 kDa Blocking/Dilution buffer: 5% NFDM/TBST.

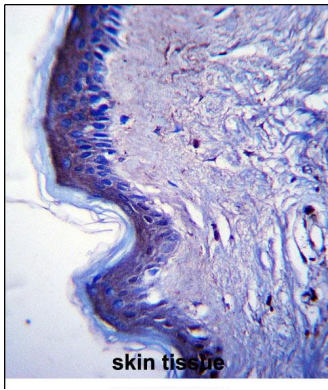


All lanes : Anti-RHBDF2 Antibody (N-term) at 1:1000 dilution Lane 1: RPMI 8226 whole cell lysate Lane 2: A549 whole cell lysate Lane 3: A431 whole cell lysate Lane 4: HT-1080 whole cell lysate Lane 5: MCF-7 whole cell lysate Lysates/proteins at 20 µg per lane. Secondary Goat Anti-Rabbit IgG, (H+L), Peroxidase conjugated at 1/10000 dilution. Predicted band size : 97 kDa Blocking/Dilution buffer: 5% NFDM/TBST.



Anti-RHBDF2 Antibody (N-term) at 1:2000 dilution + HACAT whole cell lysate Lysates/proteins at 20 µg per lane. Secondary Goat Anti-Rabbit IgG, (H+L), Peroxidase conjugated at 1/10000 dilution. Predicted band size : 97 kDa Blocking/Dilution buffer: 5% NFDM/TBST.

RHBDF2 Antibody (N-term) (Cat. #AP13588a)immunohistochemistry analysis in formalin



fixed and paraffin embedded human skin tissue followed by peroxidase conjugation of the secondary antibody and DAB staining. This data demonstrates the use of RHBDF2 Antibody (N-term) for immunohistochemistry. Clinical relevance has not been evaluated.

Please note: All products are 'FOR RESEARCH USE ONLY. NOT FOR USE IN DIAGNOSTIC OR THERAPEUTIC PROCEDURES'.