

C14orf135 Antibody (Center)

Affinity Purified Rabbit Polyclonal Antibody (Pab)

Catalog # AP13598c

Product Information

Application	WB, E
Primary Accession	Q63HM2
Other Accession	NP_071940.4
Reactivity	Human
Host	Rabbit
Clonality	Polyclonal
Isotype	Rabbit IgG
Clone Names	RB32918
Calculated MW	132702
Antigen Region	789-817

Additional Information

Gene ID	64430
Other Names	Pecanex-like protein 4, Hepatitis C virus F protein-binding protein 2, HCV F protein-binding protein 2, PCNXL4, C14orf135, FBP2
Target/Specificity	This C14orf135 antibody is generated from rabbits immunized with a KLH conjugated synthetic peptide between 789-817 amino acids from the Central region of human C14orf135.
Dilution	WB~~1:1000 E~~Use at an assay dependent concentration.
Format	Purified polyclonal antibody supplied in PBS with 0.09% (W/V) sodium azide. This antibody is purified through a protein A column, followed by peptide affinity purification.
Storage	Maintain refrigerated at 2-8°C for up to 2 weeks. For long term storage store at -20°C in small aliquots to prevent freeze-thaw cycles.
Precautions	C14orf135 Antibody (Center) is for research use only and not for use in diagnostic or therapeutic procedures.

Protein Information

Name	PCNX4 (HGNC:20349)
Synonyms	C14orf135, FBP2, PCNXL4
Cellular Location	Membrane; Multi-pass membrane protein

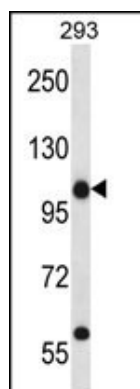
Background

The function of this protein remains unknown.

References

Huang, Y.P., et al. World J. Gastroenterol. 11(36):5659-5665(2005)

Images



C14orf135 Antibody (Center) (Cat. #AP13598c) western blot analysis in 293 cell line lysates (35ug/lane). This demonstrates the C14orf135 antibody detected the C14orf135 protein (arrow).

Please note: All products are 'FOR RESEARCH USE ONLY. NOT FOR USE IN DIAGNOSTIC OR THERAPEUTIC PROCEDURES'.