

SAMD4B Antibody (C-term)

Affinity Purified Rabbit Polyclonal Antibody (Pab)

Catalog # AP13601b

Product Information

Application	WB, E
Primary Accession	Q5PRF9
Other Accession	NP_060498.2
Reactivity	Human
Host	Rabbit
Clonality	Polyclonal
Isotype	Rabbit IgG
Clone Names	RB32924
Calculated MW	75483
Antigen Region	414-442

Additional Information

Gene ID	55095
Other Names	Protein Smaug homolog 2, Smaug 2, hSmaug2, Sterile alpha motif domain-containing protein 4B, SAM domain-containing protein 4B, SAMD4B, SMAUG2
Target/Specificity	This SAMD4B antibody is generated from rabbits immunized with a KLH conjugated synthetic peptide between 414-442 amino acids from the C-terminal region of human SAMD4B.
Dilution	WB~~1:1000 E~~Use at an assay dependent concentration.
Format	Purified polyclonal antibody supplied in PBS with 0.09% (W/V) sodium azide. This antibody is purified through a protein A column, followed by peptide affinity purification.
Storage	Maintain refrigerated at 2-8°C for up to 2 weeks. For long term storage store at -20°C in small aliquots to prevent freeze-thaw cycles.
Precautions	SAMD4B Antibody (C-term) is for research use only and not for use in diagnostic or therapeutic procedures.

Protein Information

Name	SAMD4B
Synonyms	SMAUG2

Function	Has transcriptional repressor activity. Overexpression inhibits the transcriptional activities of AP-1, p53/TP53 and CDKN1A.
Cellular Location	Cytoplasm. Nucleus
Tissue Location	Widely expressed in embryonic and adult tissues.

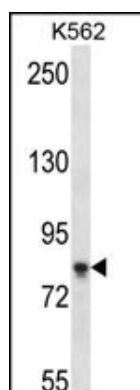
Background

Sterile alpha motif is a widespread domain in signalling and nuclear proteins. In EPH-related tyrosine kinases, it appears to mediate cell-cell initiated signal transduction via the binding of SH2-containing proteins to a conserved tyrosine. SAMD4B (Sterile alpha motif domain-containing protein 4B) belongs to the SMAUG family. SAMD4B contains 1 SAM (sterile alpha motif) domain.

References

Bailey, S.D., et al. Diabetes Care (2010) In press :
Luo, N., et al. BMB Rep 43(5):355-361(2010)
Talmud, P.J., et al. Am. J. Hum. Genet. 85(5):628-642(2009)
Ewing, R.M., et al. Mol. Syst. Biol. 3, 89 (2007) :
Beausoleil, S.A., et al. Nat. Biotechnol. 24(10):1285-1292(2006)

Images



SAMD4B Antibody (C-term) (Cat. #AP13601b) western blot analysis in K562 cell line lysates (35ug/lane). This demonstrates the SAMD4B antibody detected the SAMD4B protein (arrow).

Please note: All products are 'FOR RESEARCH USE ONLY. NOT FOR USE IN DIAGNOSTIC OR THERAPEUTIC PROCEDURES'.