

PCDHGA3 Antibody (Center)

Affinity Purified Rabbit Polyclonal Antibody (Pab)

Catalog # AP13611C

Product Information

| | |
|--------------------------|---|
| Application | WB, IHC-P, FC, E |
| Primary Accession | Q9Y5H0 |
| Other Accession | NP_061739.2 , NP_114400.1 |
| Reactivity | Human |
| Host | Rabbit |
| Clonality | Polyclonal |
| Isotype | Rabbit IgG |
| Clone Names | RB33029 |
| Calculated MW | 100971 |
| Antigen Region | 284-311 |

Additional Information

| | |
|---------------------------|--|
| Gene ID | 56112 |
| Other Names | Protocadherin gamma-A3, PCDH-gamma-A3, PCDHGA3 |
| Target/Specificity | This PCDHGA3 antibody is generated from rabbits immunized with a KLH conjugated synthetic peptide between 284-311 amino acids from the Central region of human PCDHGA3. |
| Dilution | WB~~1:1000 IHC-P~~1:100~500 FC~~1:10~50 E~~Use at an assay dependent concentration. |
| Format | Purified polyclonal antibody supplied in PBS with 0.05% (V/V) Proclin 300. This antibody is prepared by Saturated Ammonium Sulfate (SAS) precipitation followed by dialysis against PBS. |
| Storage | Maintain refrigerated at 2-8°C for up to 2 weeks. For long term storage store at -20°C in small aliquots to prevent freeze-thaw cycles. |
| Precautions | PCDHGA3 Antibody (Center) is for research use only and not for use in diagnostic or therapeutic procedures. |

Protein Information

| | |
|-----------------|--|
| Name | PCDHGA3 |
| Function | Potential calcium-dependent cell-adhesion protein. May be involved in the establishment and maintenance of specific neuronal connections in the brain. |

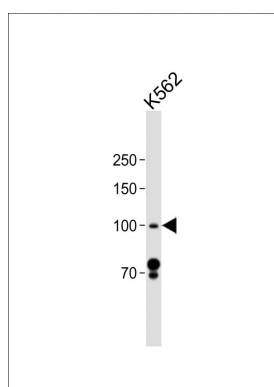
Background

This gene is a member of the protocadherin gamma gene cluster, one of three related clusters tandemly linked on chromosome five. These gene clusters have an immunoglobulin-like organization, suggesting that a novel mechanism may be involved in their regulation and expression. The gamma gene cluster includes 22 genes divided into 3 subfamilies. Subfamily A contains 12 genes, subfamily B contains 7 genes and 2 pseudogenes, and the more distantly related subfamily C contains 3 genes. The tandem array of 22 large, variable region exons are followed by a constant region, containing 3 exons shared by all genes in the cluster. Each variable region exon encodes the extracellular region, which includes 6 cadherin ectodomains and a transmembrane region. The constant region exons encode the common cytoplasmic region. These neural cadherin-like cell adhesion proteins most likely play a critical role in the establishment and function of specific cell-cell connections in the brain. Alternative splicing has been described for the gamma cluster genes.

References

Rose, J. Phd, et al. Mol. Med. (2010) In press :
Wu, Q., et al. Genome Res. 11(3):389-404(2001)
Nollet, F., et al. J. Mol. Biol. 299(3):551-572(2000)
Yagi, T., et al. Genes Dev. 14(10):1169-1180(2000)
Wu, Q., et al. Proc. Natl. Acad. Sci. U.S.A. 97(7):3124-3129(2000)

Images



All lanes: Anti-PCDHGA3 Antibody (Center) at 1:1000 dilution + K562 whole cell lysate Lysates/proteins at 20 µg per lane. Secondary: Goat Anti-Rabbit IgG, (H+L), Peroxidase conjugated (ASP1615) at 1/15000 dilution. Observed band size: 100 KDa Blocking/Dilution buffer: 5% NFDM/TBST.

Citations

- [Protocadherin γ A3 is expressed in follicular lymphoma irrespective of BCL2 status and is associated with tumor cell growth.](#)

Please note: All products are 'FOR RESEARCH USE ONLY. NOT FOR USE IN DIAGNOSTIC OR THERAPEUTIC PROCEDURES'.