

ZCCHC14 Antibody (Center)

Affinity Purified Rabbit Polyclonal Antibody (Pab)

Catalog # AP13653c

Product Information

Application	WB, E
Primary Accession	Q8WYQ9
Other Accession	NP_055959.1
Reactivity	Human, Mouse
Host	Rabbit
Clonality	Polyclonal
Isotype	Rabbit IgG
Clone Names	RB33325
Calculated MW	100042
Antigen Region	420-449

Additional Information

Gene ID	23174
Other Names	Zinc finger CCHC domain-containing protein 14, BDG-29, ZCCHC14, KIAA0579
Target/Specificity	This ZCCHC14 antibody is generated from rabbits immunized with a KLH conjugated synthetic peptide between 420-449 amino acids from the Central region of human ZCCHC14.
Dilution	WB~~1:1000 E~~Use at an assay dependent concentration.
Format	Purified polyclonal antibody supplied in PBS with 0.09% (W/V) sodium azide. This antibody is purified through a protein A column, followed by peptide affinity purification.
Storage	Maintain refrigerated at 2-8°C for up to 2 weeks. For long term storage store at -20°C in small aliquots to prevent freeze-thaw cycles.
Precautions	ZCCHC14 Antibody (Center) is for research use only and not for use in diagnostic or therapeutic procedures.

Protein Information

Name	ZCCHC14
Synonyms	KIAA0579

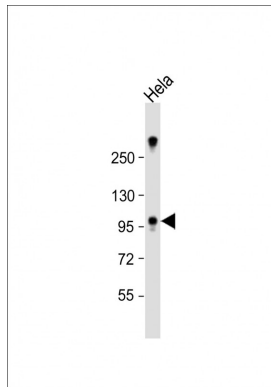
Background

The function of this protein remains unknown.

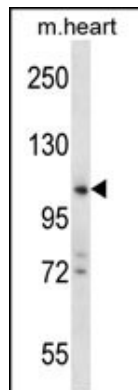
References

Nakajima, D., et al. DNA Res. 9(3):99-106(2002)

Images



Anti-ZCCHC14 Antibody (Center) at 1:1000 dilution + HeLa whole cell lysate Lysates/proteins at 20 µg per lane. Secondary Goat Anti-Rabbit IgG, (H+L), Peroxidase conjugated at 1/10000 dilution. Predicted band size : 100 kDa Blocking/Dilution buffer: 5% NFDM/TBST.



ZCCHC14 Antibody (Center) (Cat. #AP13653c) western blot analysis in mouse heart tissue lysates (35ug/lane). This demonstrates the ZCCHC14 antibody detected the ZCCHC14 protein (arrow).

Please note: All products are 'FOR RESEARCH USE ONLY. NOT FOR USE IN DIAGNOSTIC OR THERAPEUTIC PROCEDURES'.