

SSSCA1 Antibody (N-term)

Affinity Purified Rabbit Polyclonal Antibody (Pab)

Catalog # AP13654a

Product Information

Application	WB, E
Primary Accession	O60232
Other Accession	P56873 , NP_006387.1
Reactivity	Human, Mouse
Host	Rabbit
Clonality	Polyclonal
Isotype	Rabbit IgG
Clone Names	RB33338
Calculated MW	21474
Antigen Region	9-37

Additional Information

Gene ID	10534
Other Names	Sjogren syndrome/scleroderma autoantigen 1, Autoantigen p27, SSSCA1
Target/Specificity	This SSSCA1 antibody is generated from rabbits immunized with a KLH conjugated synthetic peptide between 9-37 amino acids from the N-terminal region of human SSSCA1.
Dilution	WB~~1:1000 E~~Use at an assay dependent concentration.
Format	Purified polyclonal antibody supplied in PBS with 0.09% (W/V) sodium azide. This antibody is purified through a protein A column, followed by peptide affinity purification.
Storage	Maintain refrigerated at 2-8°C for up to 2 weeks. For long term storage store at -20°C in small aliquots to prevent freeze-thaw cycles.
Precautions	SSSCA1 Antibody (N-term) is for research use only and not for use in diagnostic or therapeutic procedures.

Protein Information

Name	ZNRD2 {ECO:0000303 PubMed:32170109, ECO:0000312 HGNC:HGNC:11328}
Function	Might play a role in mitosis. Antigenic molecule. Could be a centromere-associated protein. May induce anti-centromere antibodies.

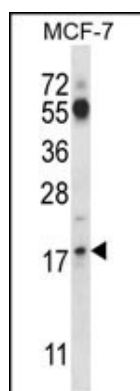
Background

This antigen is recognized by a subset of anti-centromere antibodies from patients with scleroderma and/or Sjogren's syndrome. Subcellular localization has not yet been established.

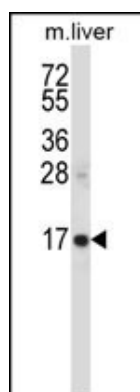
References

Shen, A., et al. Neurosurgery 65(1):153-159(2009)
Matsuoka, S., et al. Science 316(5828):1160-1166(2007)
Ewing, R.M., et al. Mol. Syst. Biol. 3, 89 (2007) :
Suzuki, H., et al. Genome Res. 11(10):1758-1765(2001)
Muro, Y., et al. Clin. Exp. Immunol. 111(2):372-376(1998)

Images



SSSCA1 Antibody (N-term) (Cat. #AP13654a) western blot analysis in MCF-7 cell line lysates (35ug/lane). This demonstrates the SSSCA1 antibody detected the SSSCA1 protein (arrow).



SSSCA1 Antibody (N-term) (Cat. #AP13654a) western blot analysis in mouse liver tissue lysates (35ug/lane). This demonstrates the SSSCA1 antibody detected the SSSCA1 protein (arrow).

Please note: All products are 'FOR RESEARCH USE ONLY. NOT FOR USE IN DIAGNOSTIC OR THERAPEUTIC PROCEDURES'.