

EMILIN3 Antibody (C-term)

Affinity Purified Rabbit Polyclonal Antibody (Pab)

Catalog # AP13662b

Product Information

Application	WB, IHC-P, E
Primary Accession	Q9NT22
Other Accession	NP_443078.1
Reactivity	Human
Host	Rabbit
Clonality	Polyclonal
Isotype	Rabbit IgG
Clone Names	RB33383
Calculated MW	82647
Antigen Region	600-629

Additional Information

Gene ID	90187
Other Names	EMILIN-3, EMILIN-5, Elastin microfibril interface-located protein 3, Elastin microfibril interfacier 3, Elastin microfibril interface-located protein 5, Elastin microfibril interfacier 5, EMILIN3, C20orf130, EMILIN5
Target/Specificity	This EMILIN3 antibody is generated from rabbits immunized with a KLH conjugated synthetic peptide between 600-629 amino acids from the C-terminal region of human EMILIN3.
Dilution	WB~~1:1000 IHC-P~~1:100~500 E~~Use at an assay dependent concentration.
Format	Purified polyclonal antibody supplied in PBS with 0.09% (W/V) sodium azide. This antibody is purified through a protein A column, followed by peptide affinity purification.
Storage	Maintain refrigerated at 2-8°C for up to 2 weeks. For long term storage store at -20°C in small aliquots to prevent freeze-thaw cycles.
Precautions	EMILIN3 Antibody (C-term) is for research use only and not for use in diagnostic or therapeutic procedures.

Protein Information

Name	EMILIN3
Synonyms	C20orf130, EMILIN5

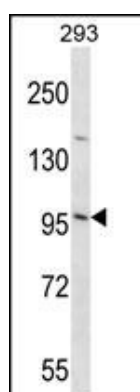
Background

The function of this protein remains unknown.

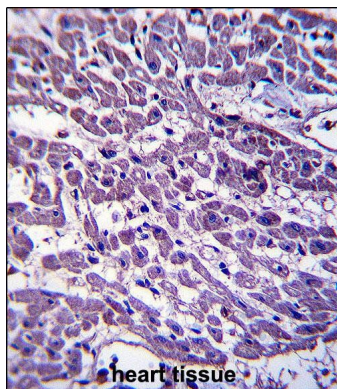
References

- Cao, J. Hybridoma (Larchmt) 26(6):417-421(2007)
Doi, M., et al. Biochem. Biophys. Res. Commun. 313(4):888-893(2004)
Leimeister, C., et al. Dev. Biol. 249(2):204-218(2002)
Deloukas, P., et al. Nature 414(6866):865-871(2001)

Images



EMILIN3 Antibody (C-term) (Cat. #AP13662b) western blot analysis in 293 cell line lysates (35ug/lane). This demonstrates the EMILIN3 antibody detected the EMILIN3 protein (arrow).



EMILIN3 Antibody (C-term) (Cat. #AP13662b) immunohistochemistry analysis in formalin fixed and paraffin embedded human heart tissue followed by peroxidase conjugation of the secondary antibody and DAB staining. This data demonstrates the use of EMILIN3 Antibody (C-term) for immunohistochemistry. Clinical relevance has not been evaluated.

Please note: All products are 'FOR RESEARCH USE ONLY. NOT FOR USE IN DIAGNOSTIC OR THERAPEUTIC PROCEDURES'.