

BTF3L4 Antibody (C-term)

Affinity Purified Rabbit Polyclonal Antibody (Pab)

Catalog # AP13668b

Product Information

Application	WB, E
Primary Accession	Q96K17
Other Accession	Q9CQH7 , NP_689478.1
Reactivity	Human
Predicted	Mouse
Host	Rabbit
Clonality	Polyclonal
Isotype	Rabbit IgG
Clone Names	RB33438
Calculated MW	17271
Antigen Region	111-140

Additional Information

Gene ID	91408
Other Names	Transcription factor BTF3 homolog 4, Basic transcription factor 3-like 4, BTF3L4
Target/Specificity	This BTF3L4 antibody is generated from rabbits immunized with a KLH conjugated synthetic peptide between 111-140 amino acids from the C-terminal region of human BTF3L4.
Dilution	WB~~1:1000 E~~Use at an assay dependent concentration.
Format	Purified polyclonal antibody supplied in PBS with 0.09% (W/V) sodium azide. This antibody is purified through a protein A column, followed by peptide affinity purification.
Storage	Maintain refrigerated at 2-8°C for up to 2 weeks. For long term storage store at -20°C in small aliquots to prevent freeze-thaw cycles.
Precautions	BTF3L4 Antibody (C-term) is for research use only and not for use in diagnostic or therapeutic procedures.

Protein Information

Name	BTF3L4
------	--------

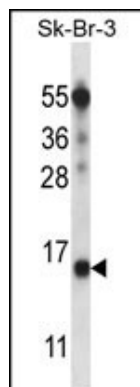
Background

The function of this protein remains unknown.

References

Venter, J.C., et al. Science 291(5507):1304-1351(2001)

Images



BTF3L4 Antibody (C-term) (Cat. #AP13668b) western blot analysis in SK-BR-3 cell line lysates (35ug/lane). This demonstrates the BTF3L4 antibody detected the BTF3L4 protein (arrow).

Please note: All products are 'FOR RESEARCH USE ONLY. NOT FOR USE IN DIAGNOSTIC OR THERAPEUTIC PROCEDURES'.