

SMOC1 Antibody (C-term)

Affinity Purified Rabbit Polyclonal Antibody (Pab)

Catalog # AP13673B

Product Information

Application	WB, E
Primary Accession	Q9H4F8
Other Accession	NP_071420.1 , NP_001030024.1
Reactivity	Human, Mouse
Host	Rabbit
Clonality	Polyclonal
Isotype	Rabbit IgG
Clone Names	RB33461
Calculated MW	48163
Antigen Region	284-313

Additional Information

Gene ID	64093
Other Names	SPARC-related modular calcium-binding protein 1, Secreted modular calcium-binding protein 1, SMOC-1, SMOC1
Target/Specificity	This SMOC1 antibody is generated from rabbits immunized with a KLH conjugated synthetic peptide between 284-313 amino acids from the C-terminal region of human SMOC1.
Dilution	WB~~1:2000 E~~Use at an assay dependent concentration.
Format	Purified polyclonal antibody supplied in PBS with 0.09% (W/V) sodium azide. This antibody is purified through a protein A column, followed by peptide affinity purification.
Storage	Maintain refrigerated at 2-8°C for up to 2 weeks. For long term storage store at -20°C in small aliquots to prevent freeze-thaw cycles.
Precautions	SMOC1 Antibody (C-term) is for research use only and not for use in diagnostic or therapeutic procedures.

Protein Information

Name	SMOC1
Function	Plays essential roles in both eye and limb development. Probable regulator of osteoblast differentiation.

Cellular Location	Secreted, extracellular space, extracellular matrix, basement membrane. Note=In or around the basement membrane
Tissue Location	Widely expressed in many tissues with a strongest signal in ovary. No expression in spleen

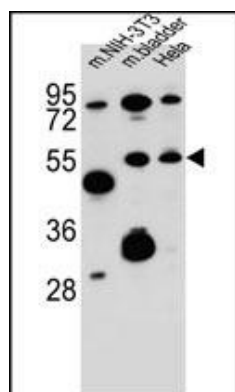
Background

The function of this protein remains unknown.

References

Choi, Y.A., et al. J. Proteome Res. 9(6):2946-2956(2010)
Sherva, R., et al. Am. J. Hypertens. 20(4):398-402(2007)
Heilig, R., et al. Nature 421(6923):601-607(2003)
Vannahme, C., et al. J. Biol. Chem. 277(41):37977-37986(2002)

Images



SMOC1 Antibody (C-term) (Cat. #AP13673b) western blot analysis in mouse NIH-3T3 cell line and mouse bladder tissue and HeLa cell line lysates (35ug/lane). This demonstrates the SMOC1 antibody detected the SMOC1 protein (arrow).

Citations

- [PRDM16 orchestrates angiogenesis via neural differentiation in the developing brain](#)

Please note: All products are 'FOR RESEARCH USE ONLY. NOT FOR USE IN DIAGNOSTIC OR THERAPEUTIC PROCEDURES'.