

PPP1R3F Antibody (C-term)

Affinity Purified Rabbit Polyclonal Antibody (Pab)

Catalog # AP13676b

Product Information

Application	WB, IHC-P, E
Primary Accession	Q6ZSY5
Other Accession	Q9JIG4 , NP_149992.3
Reactivity	Human
Predicted	Mouse
Host	Rabbit
Clonality	Polyclonal
Isotype	Rabbit IgG
Clone Names	RB33482
Calculated MW	82798
Antigen Region	549-578

Additional Information

Gene ID	89801
Other Names	Protein phosphatase 1 regulatory subunit 3F, R3F, PPP1R3F
Target/Specificity	This PPP1R3F antibody is generated from rabbits immunized with a KLH conjugated synthetic peptide between 549-578 amino acids from the C-terminal region of human PPP1R3F.
Dilution	WB~~1:1000 IHC-P~~1:100~500 E~~Use at an assay dependent concentration.
Format	Purified polyclonal antibody supplied in PBS with 0.09% (W/V) sodium azide. This antibody is purified through a protein A column, followed by peptide affinity purification.
Storage	Maintain refrigerated at 2-8°C for up to 2 weeks. For long term storage store at -20°C in small aliquots to prevent freeze-thaw cycles.
Precautions	PPP1R3F Antibody (C-term) is for research use only and not for use in diagnostic or therapeutic procedures.

Protein Information

Name	PPP1R3F
Function	Glycogen-targeting subunit for protein phosphatase 1 (PP1).
Cellular Location	Membrane; Single-pass membrane protein

Tissue Location

Expressed in brain, skeletal muscle and heart.

Background

This gene encodes a protein that has been identified as one of several type-1 protein phosphatase (PP1) regulatory subunits. One or two of these subunits, together with the well-conserved catalytic subunit, can form the PP1 holoenzyme, where the regulatory subunit functions to regulate substrate specificity and/or targeting to a particular cellular compartment. Alternative splicing results in multiple transcript variants.

References

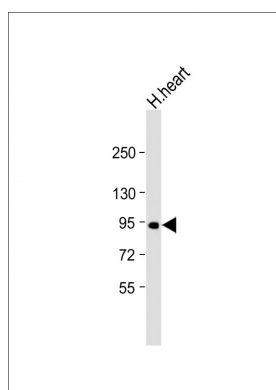
Suttner, K., et al. J. Allergy Clin. Immunol. 125(6):1395-1399(2010)

Piton, A., et al. Mol. Psychiatry (2010) In press :

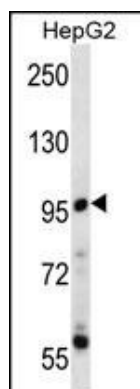
Ceulemans, H., et al. Bioessays 24(4):371-381(2002)

Schindelhauer, D., et al. Genome Res. 6(11):1056-1069(1996)

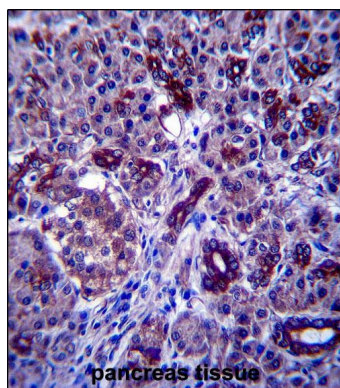
Images



Anti-PPP1R3F Antibody (C-term) at 1:1000 dilution + human heart lysate Lysates/proteins at 20 µg per lane. Secondary Goat Anti-Rabbit IgG, (H+L), Peroxidase conjugated at 1/10000 dilution. Predicted band size : 83 kDa Blocking/Dilution buffer: 5% NFDM/TBST.



PPP1R3F Antibody (C-term) (Cat. #AP13676b) western blot analysis in HepG2 cell line lysates (35ug/lane). This demonstrates the PPP1R3F antibody detected the PPP1R3F protein (arrow).



PPP1R3F Antibody (C-term) (Cat. #AP13676b) immunohistochemistry analysis in formalin fixed and paraffin embedded human pancreas tissue followed by peroxidase conjugation of the secondary antibody and DAB staining. This data demonstrates the use of PPP1R3F Antibody (C-term) for immunohistochemistry. Clinical relevance has not been evaluated.

Please note: All products are 'FOR RESEARCH USE ONLY. NOT FOR USE IN DIAGNOSTIC OR THERAPEUTIC PROCEDURES'.