

# KIAA1274 Antibody (C-term)

Affinity Purified Rabbit Polyclonal Antibody (Pab)

Catalog # AP13680b

## Product Information

---

|                          |                             |
|--------------------------|-----------------------------|
| <b>Application</b>       | WB, IHC-P, E                |
| <b>Primary Accession</b> | <a href="#">Q9ULE6</a>      |
| <b>Other Accession</b>   | <a href="#">NP_055246.2</a> |
| <b>Reactivity</b>        | Human                       |
| <b>Host</b>              | Rabbit                      |
| <b>Clonality</b>         | Polyclonal                  |
| <b>Isotype</b>           | Rabbit IgG                  |
| <b>Clone Names</b>       | RB33510                     |
| <b>Calculated MW</b>     | 96754                       |
| <b>Antigen Region</b>    | 810-839                     |

## Additional Information

---

|                           |  |
|---------------------------|--|
| <b>Gene ID</b>            | 27143  |
| <b>Other Names</b>        | Paladin, PALD1, KIAA1274, PALD   |
| <b>Target/Specificity</b> | This KIAA1274 antibody is generated from rabbits immunized with a KLH conjugated synthetic peptide between 810-839 amino acids from the C-terminal region of human KIAA1274. |
| <b>Dilution</b>           | WB~~1:1000 IHC-P~~1:100~500 E~~Use at an assay dependent concentration.  |
| <b>Format</b>             | Purified polyclonal antibody supplied in PBS with 0.09% (W/V) sodium azide. This antibody is purified through a protein A column, followed by peptide affinity purification. |
| <b>Storage</b>            | Maintain refrigerated at 2-8°C for up to 2 weeks. For long term storage store at -20°C in small aliquots to prevent freeze-thaw cycles.                                      |
| <b>Precautions</b>        | KIAA1274 Antibody (C-term) is for research use only and not for use in diagnostic or therapeutic procedures.   |

## Protein Information

---

|                          |                     |
|--------------------------|---------------------|
| <b>Name</b>              | PALD1               |
| <b>Synonyms</b>          | KIAA1274, PALD      |
| <b>Cellular Location</b> | Cytoplasm, cytosol. |

## Tissue Location

Expressed in endothelial cells, and in certain larger vessels, in mural cells. In the brain, possibly expressed in microglia. Expressed in peripheral blood mononuclear cells (at protein level).

## Background

---

The function of this protein remains unknown.

## References

---

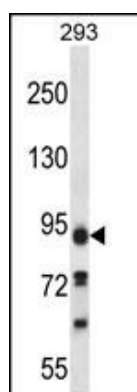
Cotsapas, C., et al. Hum. Mol. Genet. 18(18):3502-3507(2009)

Trynka, G., et al. Gut 58(8):1078-1083(2009)

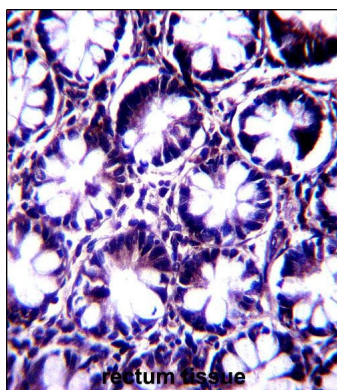
Huang, S.M., et al. PLoS ONE 4 (9), E6871 (2009) :

## Images

---



KIAA1274 Antibody (C-term) (Cat. #AP13680b) western blot analysis in 293 cell line lysates (35ug/lane). This demonstrates the KIAA1274 antibody detected the KIAA1274 protein (arrow).



KIAA1274 Antibody (C-term) (Cat. #AP13680b) immunohistochemistry analysis in formalin fixed and paraffin embedded human rectum tissue followed by peroxidase conjugation of the secondary antibody and DAB staining. This data demonstrates the use of KIAA1274 Antibody (C-term) for immunohistochemistry. Clinical relevance has not been evaluated.

Please note: All products are 'FOR RESEARCH USE ONLY. NOT FOR USE IN DIAGNOSTIC OR THERAPEUTIC PROCEDURES'.