

ITLN2 Antibody (Center)

Affinity Purified Rabbit Polyclonal Antibody (Pab)

Catalog # AP13688c

Product Information

Application	WB, E
Primary Accession	Q8WWU7
Other Accession	Q8WWA0 , O88310 , NP_543154.1
Reactivity	Human
Predicted	Mouse
Host	Rabbit
Clonality	Polyclonal
Isotype	Rabbit IgG
Clone Names	RB33589
Calculated MW	36212
Antigen Region	122-151

Additional Information

Gene ID	142683
Other Names	Intelectin-2, Endothelial lectin HL-2, ITLN2
Target/Specificity	This ITLN2 antibody is generated from rabbits immunized with a KLH conjugated synthetic peptide between 122-151 amino acids from the Central region of human ITLN2.
Dilution	WB~~1:1000 E~~Use at an assay dependent concentration.
Format	Purified polyclonal antibody supplied in PBS with 0.09% (W/V) sodium azide. This antibody is purified through a protein A column, followed by peptide affinity purification.
Storage	Maintain refrigerated at 2-8°C for up to 2 weeks. For long term storage store at -20°C in small aliquots to prevent freeze-thaw cycles.
Precautions	ITLN2 Antibody (Center) is for research use only and not for use in diagnostic or therapeutic procedures.

Protein Information

Name	ITLN2
Function	May play a role in the defense system against pathogens.
Cellular Location	Secreted.

Tissue Location

Expressed only in the small intestine.

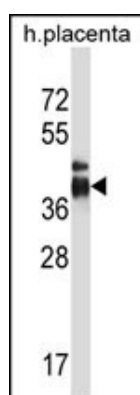
Background

ITLN2 may play a role in the defense system against pathogens (By similarity).

References

Jablonski, K.A., et al. Diabetes (2010) In press :
Bailey, S.D., et al. Diabetes Care (2010) In press :
Talmud, P.J., et al. Am. J. Hum. Genet. 85(5):628-642(2009)
Clark, H.F., et al. Genome Res. 13(10):2265-2270(2003)
Lee, J.K., et al. Glycobiology 11(1):65-73(2001)

Images



ITLN2 Antibody (Center) (Cat. #AP13688c) western blot analysis in human placenta tissue lysates (35ug/lane). This demonstrates the ITLN2 antibody detected the ITLN2 protein (arrow).

Please note: All products are 'FOR RESEARCH USE ONLY. NOT FOR USE IN DIAGNOSTIC OR THERAPEUTIC PROCEDURES'.