

GYPB Antibody (Center)

Affinity Purified Rabbit Polyclonal Antibody (Pab)

Catalog # AP13698c

Product Information

Application	WB, IHC-P, E
Primary Accession	P06028
Other Accession	NP_002091.3
Reactivity	Human
Host	Rabbit
Clonality	Polyclonal
Isotype	Rabbit IgG
Clone Names	RB33617
Calculated MW	9782
Antigen Region	22-51

Additional Information

Gene ID	2994
Other Names	Glycophorin-B, PAS-3, SS-active sialoglycoprotein, Sialoglycoprotein delta, CD235b, GYPB, GPB
Target/Specificity	This GYPB antibody is generated from rabbits immunized with a KLH conjugated synthetic peptide between 22-51 amino acids from the Central region of human GYPB.
Dilution	WB~~1:1000 IHC-P~~1:100~500 E~~Use at an assay dependent concentration.
Format	Purified polyclonal antibody supplied in PBS with 0.09% (W/V) sodium azide. This antibody is purified through a protein A column, followed by peptide affinity purification.
Storage	Maintain refrigerated at 2-8°C for up to 2 weeks. For long term storage store at -20°C in small aliquots to prevent freeze-thaw cycles.
Precautions	GYPB Antibody (Center) is for research use only and not for use in diagnostic or therapeutic procedures.

Protein Information

Name	GYPB (HGNC:4703)
Synonyms	GPB
Function	Component of the ankyrin-1 complex, a multiprotein complex involved in

the stability and shape of the erythrocyte membrane.

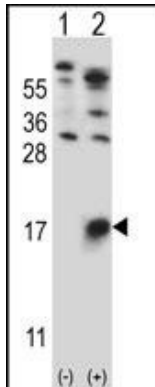
Cellular Location

Cell membrane; Single-pass type I membrane protein

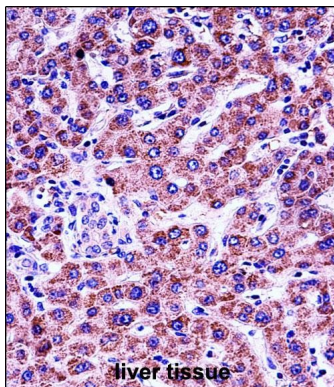
Background

This protein is a minor sialoglycoprotein in erythrocyte membranes.

Images



Western blot analysis of GYPB (arrow) using rabbit polyclonal GYPB Antibody (Center) (Cat. #AP13698c). 293 cell lysates (2 ug/lane) either nontransfected (Lane 1) or transiently transfected (Lane 2) with the GYPB gene.



GYPB Antibody (Center) (Cat. #AP13698c) immunohistochemistry analysis in formalin fixed and paraffin embedded human liver tissue followed by peroxidase conjugation of the secondary antibody and DAB staining. This data demonstrates the use of GYPB Antibody (Center) for immunohistochemistry. Clinical relevance has not been evaluated.

Please note: All products are 'FOR RESEARCH USE ONLY. NOT FOR USE IN DIAGNOSTIC OR THERAPEUTIC PROCEDURES'.