

MMP16 Antibody (C-term)

Affinity Purified Rabbit Polyclonal Antibody (Pab)

Catalog # AP13713b

Product Information

Application	WB, IHC-P, E
Primary Accession	P51512
Other Accession	NP_005932.2 , NP_072086.2
Reactivity	Human
Host	Rabbit
Clonality	Polyclonal
Isotype	Rabbit IgG
Clone Names	RB33657
Calculated MW	69521
Antigen Region	519-548

Additional Information

Gene ID	4325
Other Names	Matrix metalloproteinase-16, MMP-16, 3424-, MMP-X2, Membrane-type matrix metalloproteinase 3, MT-MMP 3, MTMMP3, Membrane-type-3 matrix metalloproteinase, MT3-MMP, MT3MMP, MMP16, MMPX2
Target/Specificity	This MMP16 antibody is generated from rabbits immunized with a KLH conjugated synthetic peptide between 519-548 amino acids from the C-terminal region of human MMP16.
Dilution	WB~~1:1000 IHC-P~~1:100~500 E~~Use at an assay dependent concentration.
Format	Purified polyclonal antibody supplied in PBS with 0.09% (W/V) sodium azide. This antibody is purified through a protein A column, followed by peptide affinity purification.
Storage	Maintain refrigerated at 2-8°C for up to 2 weeks. For long term storage store at -20°C in small aliquots to prevent freeze-thaw cycles.
Precautions	MMP16 Antibody (C-term) is for research use only and not for use in diagnostic or therapeutic procedures.

Protein Information

Name	MMP16 (HGNC:7162)
Function	Endopeptidase that degrades various components of the extracellular matrix, such as collagen type III and fibronectin. Activates progelatinase A.

Involved in the matrix remodeling of blood vessels. Isoform short cleaves fibronectin and also collagen type III, but at lower rate. It has no effect on type I, II, IV and V collagen. However, upon interaction with CSPG4, it may be involved in degradation and invasion of type I collagen by melanoma cells.

Cellular Location

[Isoform Long]: Cell membrane; Single-pass type I membrane protein; Extracellular side. Note=Localized at the cell surface of melanoma cells

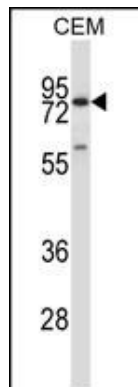
Tissue Location

Expressed in heart, brain, placenta, ovary and small intestine. Isoform Short is found in the ovary

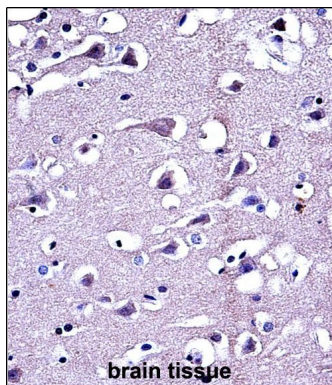
Background

Endopeptidase that degrades various components of the extracellular matrix, such as collagen type III and fibronectin. Activates progelatinase A. Involved in the matrix remodeling of blood vessels. Isoform short cleaves fibronectin and also collagen type III, but at lower rate. It has no effect on type I, II, IV and V collagen. However, upon interaction with CSPG4, it may be involved in degradation and invasion of type I collagen by melanoma cells.

Images



MMP16 Antibody (C-term) (Cat. #AP13713b) western blot analysis in CEM cell line lysates (35ug/lane). This demonstrates the MMP16 antibody detected the MMP16 protein (arrow).



MMP16 Antibody (C-term) (Cat. #AP13713b) immunohistochemistry analysis in formalin fixed and paraffin embedded human brain tissue followed by peroxidase conjugation of the secondary antibody and DAB staining. This data demonstrates the use of MMP16 Antibody (C-term) for immunohistochemistry. Clinical relevance has not been evaluated.

Citations

- [MMP16 promotes tumor metastasis and indicates poor prognosis in hepatocellular carcinoma.](#)
- [High expression of matrix metalloproteinases 16 is associated with the aggressive malignant behavior and poor survival outcome in colorectal carcinoma.](#)