

MMP8 Antibody (N-term)

Affinity Purified Rabbit Polyclonal Antibody (Pab)

Catalog # AP13723a

Product Information

Application	WB, E
Primary Accession	P22894
Other Accession	NP_002415.1
Reactivity	Human
Host	Rabbit
Clonality	Polyclonal
Isotype	Rabbit IgG
Clone Names	RB33692
Calculated MW	53412
Antigen Region	56-84

Additional Information

Gene ID	4317
Other Names	Neutrophil collagenase, Matrix metalloproteinase-8, MMP-8, PMNL collagenase, PMNL-CL, MMP8, CLG1
Target/Specificity	This MMP8 antibody is generated from rabbits immunized with a KLH conjugated synthetic peptide between 56-84 amino acids from the N-terminal region of human MMP8.
Dilution	WB~~1:1000 E~~Use at an assay dependent concentration.
Format	Purified polyclonal antibody supplied in PBS with 0.09% (W/V) sodium azide. This antibody is purified through a protein A column, followed by peptide affinity purification.
Storage	Maintain refrigerated at 2-8°C for up to 2 weeks. For long term storage store at -20°C in small aliquots to prevent freeze-thaw cycles.
Precautions	MMP8 Antibody (N-term) is for research use only and not for use in diagnostic or therapeutic procedures.

Protein Information

Name	MMP8
Synonyms	CLG1
Function	Can degrade fibrillar type I, II, and III collagens.

Cellular Location	Cytoplasmic granule. Secreted, extracellular space, extracellular matrix. Note=Stored in intracellular granules
Tissue Location	Neutrophils.

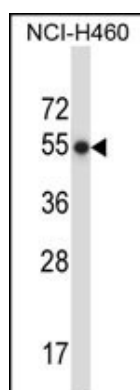
Background

Proteins of the matrix metalloproteinase (MMP) family are involved in the breakdown of extracellular matrix in normal physiological processes, such as embryonic development, reproduction, and tissue remodeling, as well as in disease processes, such as arthritis and metastasis. Most MMP's are secreted as inactive proproteins which are activated when cleaved by extracellular proteinases. However, the enzyme encoded by this gene is stored in secondary granules within neutrophils and is activated by autolytic cleavage. Its function is degradation of type I, II and III collagens. The gene is part of a cluster of MMP genes which localize to chromosome 11q22.3.

References

Li, Y., et al. J. Surg. Res. 163 (2), E99-E104 (2010) :
Romero, R., et al. Am. J. Obstet. Gynecol. 203 (4), 361 (2010) :
Bailey, S.D., et al. Diabetes Care 33(10):2250-2253(2010)
Alexander, J.S., et al. Mult. Scler. 16(7):801-809(2010)
Djuric, T., et al. J. Clin. Lab. Anal. 24(4):246-251(2010)

Images



MMP8 Antibody (N-term) (Cat. #AP13723a) western blot analysis in NCI-H460 cell line lysates (35ug/lane). This demonstrates the MMP8 antibody detected the MMP8 protein (arrow).

Please note: All products are 'FOR RESEARCH USE ONLY. NOT FOR USE IN DIAGNOSTIC OR THERAPEUTIC PROCEDURES'.