

# RANBP3L Antibody (Center)

Affinity Purified Rabbit Polyclonal Antibody (Pab)

Catalog # AP13762c

## Product Information

---

<b>Application</b>	WB, IHC-P, E
<b>Primary Accession</b>	<a href="#">Q86VV4</a>
<b>Other Accession</b>	<a href="#">NP_659437.3</a> , <a href="#">NP_001154901.1</a>
<b>Reactivity</b>	Human
<b>Host</b>	Rabbit
<b>Clonality</b>	Polyclonal
<b>Isotype</b>	Rabbit IgG
<b>Clone Names</b>	RB33820
<b>Calculated MW</b>	52211
<b>Antigen Region</b>	137-165

## Additional Information

---

<b>Gene ID</b>	202151
<b>Other Names</b>	Ran-binding protein 3-like, RANBP3L
<b>Target/Specificity</b>	This RANBP3L antibody is generated from rabbits immunized with a KLH conjugated synthetic peptide between 137-165 amino acids from the Central region of human RANBP3L.
<b>Dilution</b>	WB~~1:1000 IHC-P~~1:100~500 E~~Use at an assay dependent concentration.
<b>Format</b>	Purified polyclonal antibody supplied in PBS with 0.09% (W/V) sodium azide. This antibody is purified through a protein A column, followed by peptide affinity purification.
<b>Storage</b>	Maintain refrigerated at 2-8°C for up to 2 weeks. For long term storage store at -20°C in small aliquots to prevent freeze-thaw cycles.
<b>Precautions</b>	RANBP3L Antibody (Center) is for research use only and not for use in diagnostic or therapeutic procedures.

## Protein Information

---

<b>Name</b>	RANBP3L
<b>Function</b>	Nuclear export factor for BMP-specific SMAD1/5/8 that plays a critical role in terminating BMP signaling and regulating mesenchymal stem cell differentiation by blocking osteoblast differentiation to promote myogenic differentiation. Directly recognizes dephosphorylated SMAD1/5/8 and mediates

their nuclear export in a Ran-dependent manner.

## Cellular Location

Nucleus. Cytoplasm

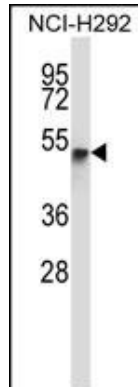
## Background

---

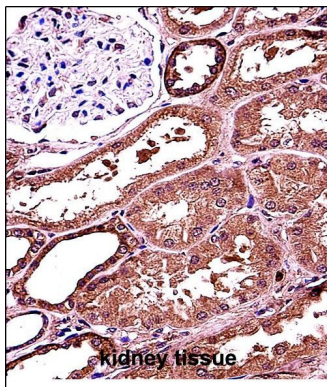
The function of this protein remains unknown.

## Images

---



RANBP3L Antibody (Center) (Cat. #AP13762c) western blot analysis in NCI-H292 cell line lysates (35ug/lane). This demonstrates the RANBP3L antibody detected the RANBP3L protein (arrow).



RANBP3L Antibody (Center) (Cat. #AP13762c) immunohistochemistry analysis in formalin fixed and paraffin embedded human kidney tissue followed by peroxidase conjugation of the secondary antibody and DAB staining. This data demonstrates the use of RANBP3L Antibody (Center) for immunohistochemistry. Clinical relevance has not been evaluated.

Please note: All products are 'FOR RESEARCH USE ONLY. NOT FOR USE IN DIAGNOSTIC OR THERAPEUTIC PROCEDURES'.