

CELA3B Antibody (N-term)

Affinity Purified Rabbit Polyclonal Antibody (Pab)

Catalog # AP13770a

Product Information

Application	WB, IHC-P, E
Primary Accession	P08861
Other Accession	NP_031378.1
Reactivity	Human
Host	Rabbit
Clonality	Polyclonal
Isotype	Rabbit IgG
Clone Names	RB33872
Calculated MW	29263
Antigen Region	70-98

Additional Information

Gene ID	23436
Other Names	Chymotrypsin-like elastase family member 3B, Elastase IIIB, Elastase-3B, Protease E, CELA3B, ELA3B
Target/Specificity	This CELA3B antibody is generated from rabbits immunized with a KLH conjugated synthetic peptide between 70-98 amino acids from the N-terminal region of human CELA3B.
Dilution	WB~~1:1000 IHC-P~~1:100~500 E~~Use at an assay dependent concentration.
Format	Purified polyclonal antibody supplied in PBS with 0.09% (W/V) sodium azide. This antibody is purified through a protein A column, followed by peptide affinity purification.
Storage	Maintain refrigerated at 2-8°C for up to 2 weeks. For long term storage store at -20°C in small aliquots to prevent freeze-thaw cycles.
Precautions	CELA3B Antibody (N-term) is for research use only and not for use in diagnostic or therapeutic procedures.

Protein Information

Name	CELA3B
Synonyms	ELA3B
Function	Efficient protease with alanine specificity but only little elastolytic activity.

Tissue Location

Pancreas. Not detectable in keratinocytes.

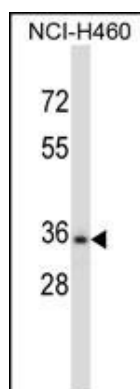
Background

Elastases form a subfamily of serine proteases that hydrolyze many proteins in addition to elastin. Humans have six elastase genes which encode the structurally similar proteins elastase 1, 2, 2A, 2B, 3A, and 3B. Unlike other elastases, elastase 3B has little elastolytic activity. Like most of the human elastases, elastase 3B is secreted from the pancreas as a zymogen and, like other serine proteases such as trypsin, chymotrypsin and kallikrein, it has a digestive function in the intestine. Elastase 3B preferentially cleaves proteins after alanine residues. Elastase 3B may also function in the intestinal transport and metabolism of cholesterol. Both elastase 3A and elastase 3B have been referred to as protease E and as elastase 1, and excretion of this protein in fecal material is frequently used as a measure of pancreatic function in clinical assays.

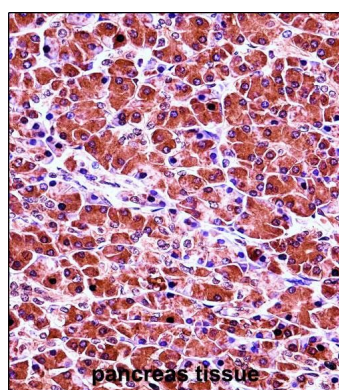
References

Gao, J., et al. Oncol. Rep. 23(6):1683-1692(2010)
Teichmann, J., et al. Eur. J. Med. Res. 13(12):563-567(2008)
Hahn, J.U., et al. Pancreas 36(3):274-278(2008)
Mann, S.T., et al. Eur. J. Med. Res. 13(2):68-72(2008)
Vesterhus, M., et al. Diabetes Care 31(2):306-310(2008)

Images



CELA3B Antibody (N-term) (Cat. #AP13770a) western blot analysis in NCI-H460 cell line lysates (35ug/lane). This demonstrates the CELA3B antibody detected the CELA3B protein (arrow).



CELA3B Antibody (N-term) (Cat. #AP13770a) immunohistochemistry analysis in formalin fixed and paraffin embedded human pancreas tissue followed by peroxidase conjugation of the secondary antibody and DAB staining. This data demonstrates the use of CELA3B Antibody (N-term) for immunohistochemistry. Clinical relevance has not been evaluated.

Please note: All products are 'FOR RESEARCH USE ONLY. NOT FOR USE IN DIAGNOSTIC OR THERAPEUTIC PROCEDURES'.