

Mouse Cdk3 Antibody (C-term)

Affinity Purified Rabbit Polyclonal Antibody (Pab)

Catalog # AP13803b

Product Information

Application	WB, E
Primary Accession	Q80YP0
Reactivity	Human
Host	Rabbit
Clonality	Polyclonal
Isotype	Rabbit IgG
Clone Names	RB34458
Calculated MW	34075
Antigen Region	249-277

Additional Information

Other Names	Cyclin-dependent kinase 3, Cell division protein kinase 3, Cdk3, Cdk3-ps, Cdkn3
Target/Specificity	This Mouse Cdk3 antibody is generated from rabbits immunized with a KLH conjugated synthetic peptide between 249-277 amino acids from the C-terminal region of mouse Cdk3.
Dilution	WB~~1:1000 E~~Use at an assay dependent concentration.
Format	Purified polyclonal antibody supplied in PBS with 0.09% (W/V) sodium azide. This antibody is purified through a protein A column, followed by peptide affinity purification.
Storage	Maintain refrigerated at 2-8°C for up to 2 weeks. For long term storage store at -20°C in small aliquots to prevent freeze-thaw cycles.
Precautions	Mouse Cdk3 Antibody (C-term) is for research use only and not for use in diagnostic or therapeutic procedures.

Protein Information

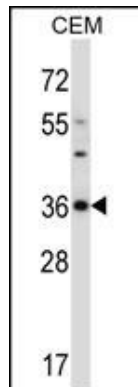
Name	Cdk3
Synonyms	Cdk3-ps, Cdkn3
Function	Serine/threonine-protein kinase that plays a critical role in the control of the eukaryotic cell cycle; involved in G0-G1 and G1-S cell cycle transitions. Interacts with CCNC/cyclin-C during interphase. Phosphorylates histone H1, ATF1, RB1 and CABLES1. ATF1 phosphorylation triggers ATF1 transactivation

and transcriptional activities, and promotes cell proliferation and transformation. CDK3/cyclin-C mediated RB1 phosphorylation is required for G0-G1 transition. Promotes G1-S transition probably by contributing to the activation of E2F1, E2F2 and E2F3 in a RB1-independent manner.

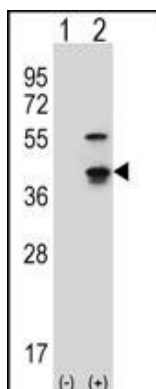
Background

Probably involved in the control of the cell cycle. Interacts with a yet unknown type of cyclin. Can phosphorylate histone H1 (By similarity).

Images



Mouse Cdk3 Antibody (C-term) (Cat. #AP13803b) western blot analysis in CEM cell line lysates (35ug/lane). This demonstrates the Cdk3 antibody detected the Cdk3 protein (arrow).



Western blot analysis of Cdk3 (arrow) using rabbit polyclonal Mouse Cdk3 Antibody (C-term) (Cat. #AP13803b). 293 cell lysates (2 ug/lane) either nontransfected (Lane 1) or transiently transfected (Lane 2) with the Cdk3 gene.

Please note: All products are 'FOR RESEARCH USE ONLY. NOT FOR USE IN DIAGNOSTIC OR THERAPEUTIC PROCEDURES'.