

# C5orf33 Antibody (Center)

Affinity Purified Rabbit Polyclonal Antibody (Pab)

Catalog # AP13805c

## Product Information

---

<b>Application</b>	WB, IHC-P, E
<b>Primary Accession</b>	<a href="#">Q4G0N4</a>
<b>Other Accession</b>	<a href="#">Q1HCL7</a> , <a href="#">Q8C5H8</a> , <a href="#">NP_694558.1</a> , <a href="#">NP_001078880.1</a>
<b>Reactivity</b>	Human, Mouse
<b>Predicted</b>	Rat
<b>Host</b>	Rabbit
<b>Clonality</b>	Polyclonal
<b>Isotype</b>	Rabbit IgG
<b>Clone Names</b>	RB27767
<b>Calculated MW</b>	49433
<b>Antigen Region</b>	122-150

## Additional Information

---

<b>Gene ID</b>	133686
<b>Other Names</b>	NAD kinase 2, mitochondrial, Mitochondrial NAD kinase, NAD kinase domain-containing protein 1, mitochondrial, NADK2, C5orf33, MNADK, NADKD1
<b>Target/Specificity</b>	This C5orf33 antibody is generated from rabbits immunized with a KLH conjugated synthetic peptide between 122-150 amino acids from the Central region of human C5orf33.
<b>Dilution</b>	WB~~1:1000 IHC-P~~1:100~500 E~~Use at an assay dependent concentration.
<b>Format</b>	Purified polyclonal antibody supplied in PBS with 0.09% (W/V) sodium azide. This antibody is purified through a protein A column, followed by peptide affinity purification.
<b>Storage</b>	Maintain refrigerated at 2-8°C for up to 2 weeks. For long term storage store at -20°C in small aliquots to prevent freeze-thaw cycles.
<b>Precautions</b>	C5orf33 Antibody (Center) is for research use only and not for use in diagnostic or therapeutic procedures.

## Protein Information

---

<b>Name</b>	NADK2
<b>Synonyms</b>	C5orf33, MNADK, NADKD1

<b>Function</b>	Mitochondrial NAD(+) kinase that phosphorylates NAD(+) to yield NADP(+). Can use both ATP or inorganic polyphosphate as the phosphoryl donor. Also has weak NADH kinase activity in vitro; however NADH kinase activity is much weaker than the NAD(+) kinase activity and may not be relevant in vivo.
<b>Cellular Location</b>	Mitochondrion.
<b>Tissue Location</b>	Widely expressed..

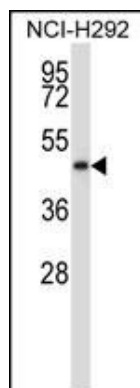
## Background

The specific function of C5ORF33 is not yet known. There are three named isoforms.

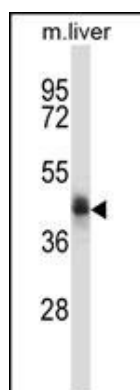
## References

Lamesch, P., et al. Genomics 89(3):307-315(2007)  
Adams, M.D., et al. Nature 377 (6547 SUPPL), 3-174 (1995) :

## Images

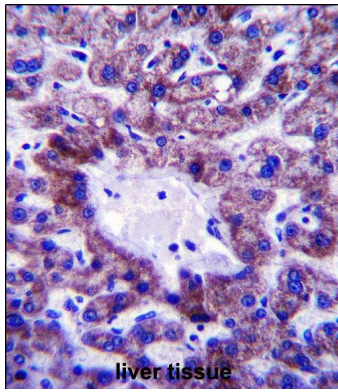


C5orf33 Antibody (Center) (Cat. #AP13805c) western blot analysis in NCI-H292 cell line lysates (35ug/lane). This demonstrates the C5orf33 antibody detected the C5orf33 protein (arrow).



C5orf33 Antibody (Center) (Cat. #AP13805c) western blot analysis in mouse liver tissue lysates (35ug/lane). This demonstrates the C5orf33 antibody detected the C5orf33 protein (arrow).

C5orf33 Antibody (Center) (Cat. #AP13805c) immunohistochemistry analysis in formalin fixed and paraffin embedded human liver tissue followed by peroxidase conjugation of the secondary antibody and DAB staining. This data demonstrates the use of C5orf33 Antibody (Center) for immunohistochemistry. Clinical relevance has not been evaluated.



Please note: All products are 'FOR RESEARCH USE ONLY. NOT FOR USE IN DIAGNOSTIC OR THERAPEUTIC PROCEDURES'.