

# MARCH11 Antibody (C-term)

Affinity Purified Rabbit Polyclonal Antibody (Pab)

Catalog # AP13811b

## Product Information

---

Application	WB, E
Primary Accession	<a href="#">A6NNE9</a>
Other Accession	<a href="#">A6P320</a> , <a href="#">Q8CBH7</a> , <a href="#">NP_001096032.1</a>
Reactivity	Human
Predicted	Mouse, Rat
Host	Rabbit
Clonality	Polyclonal
Isotype	Rabbit IgG
Clone Names	RB31539
Calculated MW	43878
Antigen Region	308-337

## Additional Information

---

Gene ID	441061
Other Names	E3 ubiquitin-protein ligase MARCH11, 632-, Membrane-associated RING finger protein 11, Membrane-associated RING-CH protein XI, MARCH-XI, MARCH11
Target/Specificity	This MARCH11 antibody is generated from rabbits immunized with a KLH conjugated synthetic peptide between 308-337 amino acids from the C-terminal region of human MARCH11.
Dilution	WB~~1:1000 E~~Use at an assay dependent concentration.
Format	Purified polyclonal antibody supplied in PBS with 0.09% (W/V) sodium azide. This antibody is purified through a protein A column, followed by peptide affinity purification.
Storage	Maintain refrigerated at 2-8°C for up to 2 weeks. For long term storage store at -20°C in small aliquots to prevent freeze-thaw cycles.
Precautions	MARCH11 Antibody (C-term) is for research use only and not for use in diagnostic or therapeutic procedures.

## Protein Information

---

Name	MARCHF11 ( <a href="#">HGNC:33609</a> )
Synonyms	MARCH11

<b>Function</b>	E3 ubiquitin-protein ligase that mediates polyubiquitination of CD4. E3 ubiquitin ligases accept ubiquitin from an E2 ubiquitin- conjugating enzyme in the form of a thioester and then directly transfer the ubiquitin to targeted substrates. May play a role in ubiquitin-dependent protein sorting in developing spermatids.
<b>Cellular Location</b>	Cytoplasmic vesicle membrane {ECO:0000250 UniProtKB:A6P320}; Multi-pass membrane protein {ECO:0000250 UniProtKB:A6P320}

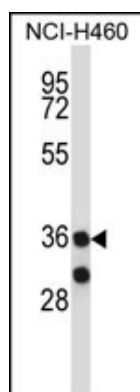
## Background

MARCH11 is a member of the MARCH family of membrane-bound E3 ubiquitin ligases (EC 6.3.2.19). These enzymes add ubiquitin (see MIM 191339) to target lysines in substrate proteins, thereby signaling their intracellular transport. March11 appears to have a role in ubiquitin-mediated protein sorting in the trans-Golgi network (TGN)-multivesicular body (MVB) transport pathway (Morokuma et al., 2007 [PubMed 17604280]).

## References

Rose, J. Phd, et al. Mol. Med. (2010) In press :  
Morokuma, Y., et al. J. Biol. Chem. 282(34):24806-24815(2007)

## Images



MARCH11 Antibody (C-term) (Cat. #AP13811b) western blot analysis in NCI-H460 cell line lysates (35ug/lane). This demonstrates the 40613 antibody detected the 40613 protein (arrow).

Please note: All products are 'FOR RESEARCH USE ONLY. NOT FOR USE IN DIAGNOSTIC OR THERAPEUTIC PROCEDURES'.