

LAPTM4A Antibody (N-term)

Affinity Purified Rabbit Polyclonal Antibody (Pab)

Catalog # AP13816a

Product Information

Application	WB, E
Primary Accession	Q15012
Other Accession	NP_055528.1
Reactivity	Mouse
Host	Rabbit
Clonality	Polyclonal
Isotype	Rabbit IgG
Clone Names	RB32601
Calculated MW	26801
Antigen Region	1-30

Additional Information

Gene ID	9741
Other Names	Lysosomal-associated transmembrane protein 4A, Golgi 4-transmembrane-spanning transporter MTP, LAPTM4A, KIAA0108, LAPTM4, MBNT, MTRP
Target/Specificity	This LAPTM4A antibody is generated from rabbits immunized with a KLH conjugated synthetic peptide between 1-30 amino acids from the N-terminal region of human LAPTM4A.
Dilution	WB~~1:1000 E~~Use at an assay dependent concentration.
Format	Purified polyclonal antibody supplied in PBS with 0.09% (W/V) sodium azide. This antibody is purified through a protein A column, followed by peptide affinity purification.
Storage	Maintain refrigerated at 2-8°C for up to 2 weeks. For long term storage store at -20°C in small aliquots to prevent freeze-thaw cycles.
Precautions	LAPTM4A Antibody (N-term) is for research use only and not for use in diagnostic or therapeutic procedures.

Protein Information

Name	LAPTM4A
Synonyms	KIAA0108, LAPTM4, MBNT, MTRP

Function	May function in the transport of nucleosides and/or nucleoside derivatives between the cytosol and the lumen of an intracellular membrane-bound compartment.
Cellular Location	Endomembrane system; Multi-pass membrane protein. Note=May reside in an intracellular membrane-bound compartment.

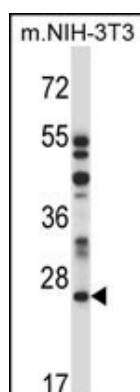
Background

This gene encodes a protein that has four predicted transmembrane domains. The function of this gene has not yet been determined; however, studies in the mouse homolog suggest a role in the transport of small molecules across endosomal and lysosomal membranes.

References

Rikova, K., et al. Cell 131(6):1190-1203(2007)
 Clark, H.F., et al. Genome Res. 13(10):2265-2270(2003)
 Tomarev, S.I., et al. Invest. Ophthalmol. Vis. Sci. 44(6):2588-2596(2003)
 Hoja, M.R., et al. Exp. Cell Res. 259(1):239-246(2000)
 Hogue, D.L., et al. J. Biol. Chem. 271(16):9801-9808(1996)

Images



LAPT M4A Antibody (N-term) (Cat. #AP13816a) western blot analysis in mouse NIH-3T3 cell line lysates (35ug/lane). This demonstrates the LAPT M4A antibody detected the LAPT M4A protein (arrow).

Please note: All products are 'FOR RESEARCH USE ONLY. NOT FOR USE IN DIAGNOSTIC OR THERAPEUTIC PROCEDURES'.