

LRIG2 Antibody (C-term)

Affinity Purified Rabbit Polyclonal Antibody (Pab)

Catalog # AP13821b

Product Information

Application	WB, IHC-P, E
Primary Accession	O94898
Other Accession	Q52KR2 , NP_055628.1
Reactivity	Human, Rat, Mouse
Host	Rabbit
Clonality	Polyclonal
Isotype	Rabbit IgG
Clone Names	RB32949
Calculated MW	118965
Antigen Region	817-845

Additional Information

Gene ID	9860
Other Names	Leucine-rich repeats and immunoglobulin-like domains protein 2, LIG-2, LRIG2, KIAA0806, LIG2
Target/Specificity	This LRIG2 antibody is generated from rabbits immunized with a KLH conjugated synthetic peptide between 817-845 amino acids from the C-terminal region of human LRIG2.
Dilution	WB~~1:2000 IHC-P~~1:100~500 E~~Use at an assay dependent concentration.
Format	Purified polyclonal antibody supplied in PBS with 0.09% (W/V) sodium azide. This antibody is purified through a protein A column, followed by peptide affinity purification.
Storage	Maintain refrigerated at 2-8°C for up to 2 weeks. For long term storage store at -20°C in small aliquots to prevent freeze-thaw cycles.
Precautions	LRIG2 Antibody (C-term) is for research use only and not for use in diagnostic or therapeutic procedures.

Protein Information

Name	LRIG2
Synonyms	KIAA0806, LIG2
Cellular Location	Cell membrane; Single-pass type I membrane protein Cytoplasm

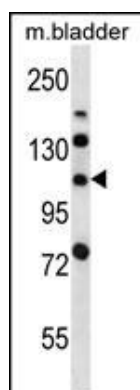
Tissue Location

Detected in all tissues analyzed.

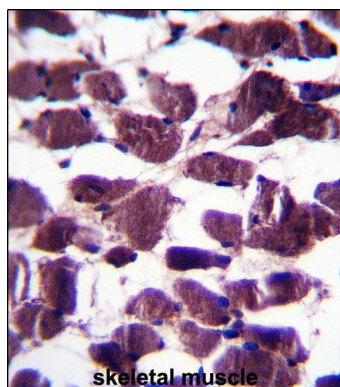
References

Andersson, U., et al. Acta Oncol (2010) In press : Holmlund, C., et al. Neuropathology 29(3):242-247(2009)
Karlsson, T., et al. J. Invest. Dermatol. 128(5):1192-1195(2008) Rush, J., et al. Nat. Biotechnol. 23(1):94-101(2005) Guo, D., et al. Genomics 84(1):157-165(2004)

Images



LRIG2 Antibody (C-term) (Cat. #AP13821b) western blot analysis in mouse bladder tissue lysates (35ug/lane). This demonstrates the LRIG2 antibody detected the LRIG2 protein (arrow).



LRIG2 Antibody (C-term) (Cat. #AP13821b) immunohistochemistry analysis in formalin fixed and paraffin embedded human skeletal muscle followed by peroxidase conjugation of the secondary antibody and DAB staining. This data demonstrates the use of LRIG2 Antibody (C-term) for immunohistochemistry. Clinical relevance has not been evaluated.

Citations

- [Urinary Tract Effects of HPSE2 Mutations.](#)
- [Heparanase 2, mutated in urofacial syndrome, mediates peripheral neural development in Xenopus.](#)

Please note: All products are 'FOR RESEARCH USE ONLY. NOT FOR USE IN DIAGNOSTIC OR THERAPEUTIC PROCEDURES'.