

# ABHD3 Antibody (C-term)

Affinity Purified Rabbit Polyclonal Antibody (Pab)

Catalog # AP13830b

## Product Information

---

Application	WB, E
Primary Accession	<a href="#">Q8WU67</a>
Other Accession	<a href="#">Q0VC00</a> , <a href="#">NP_612213.2</a>
Reactivity	Human
Predicted	Bovine
Host	Rabbit
Clonality	Polyclonal
Isotype	Rabbit IgG
Clone Names	RB33337
Calculated MW	46009
Antigen Region	282-310

## Additional Information

---

Gene ID	171586
Other Names	Abhydrolase domain-containing protein 3, 311-, Lung alpha/beta hydrolase 3, ABHD3, LABH3
Target/Specificity	This ABHD3 antibody is generated from rabbits immunized with a KLH conjugated synthetic peptide between 282-310 amino acids from the C-terminal region of human ABHD3.
Dilution	WB~~1:1000 E~~Use at an assay dependent concentration.
Format	Purified polyclonal antibody supplied in PBS with 0.09% (W/V) sodium azide. This antibody is purified through a protein A column, followed by peptide affinity purification.
Storage	Maintain refrigerated at 2-8°C for up to 2 weeks. For long term storage store at -20°C in small aliquots to prevent freeze-thaw cycles.
Precautions	ABHD3 Antibody (C-term) is for research use only and not for use in diagnostic or therapeutic procedures.

## Protein Information

---

Name	ABHD3 ( <a href="#">HGNC:18718</a> )
Function	Phospholipase that may play a role in phospholipids remodeling. May selectively cleave myristate (C14)-containing phosphatidylcholines through its

predominant phospholipase 1 activity, cleaving preferentially acyl groups in sn1 position. In parallel, may have a minor phospholipase 2 activity acting on acyl groups in position sn2. In addition to (C14)-containing phosphatidylcholines, may also act on other medium-chain-containing and oxidatively truncated phospholipids.

#### Cellular Location

Membrane; Single-pass type II membrane protein

## Background

---

This gene encodes a protein containing an alpha/beta hydrolase fold, which is a catalytic domain found in a very wide range of enzymes. The function of this protein has not been determined.

## References

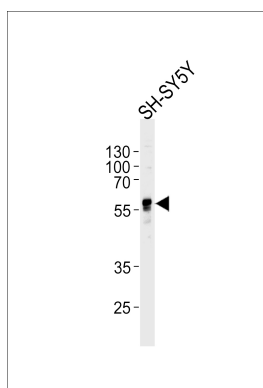
---

Lamesch, P., et al. Genomics 89(3):307-315(2007)

Edgar, A.J., et al. Biochem. Biophys. Res. Commun. 292(3):617-625(2002)

## Images

---



Western blot analysis of lysate from SH-SY5Y cell line, using ABHD3 Antibody (C-term)(Cat. #AP13830b). AP13830b was diluted at 1:1000 at each lane. A goat anti-rabbit IgG H&L(HRP) at 1:5000 dilution was used as the secondary antibody. Lysate at 35ug per lane.

Please note: All products are 'FOR RESEARCH USE ONLY. NOT FOR USE IN DIAGNOSTIC OR THERAPEUTIC PROCEDURES'.