

AGR2 Antibody (N-term)

Affinity Purified Rabbit Polyclonal Antibody (Pab)

Catalog # AP13845a

Product Information

Application	WB, IF, IHC-P, E
Primary Accession	O95994
Other Accession	NP_006399.1
Reactivity	Mouse, Human
Host	Rabbit
Clonality	Polyclonal
Isotype	Rabbit IgG
Clone Names	RB33772
Calculated MW	19979
Antigen Region	11-39

Additional Information

Gene ID	10551
Other Names	Anterior gradient protein 2 homolog, AG-2, hAG-2, HPC8, Secreted cement gland protein XAG-2 homolog, AGR2, AG2
Target/Specificity	This AGR2 antibody is generated from rabbits immunized with a KLH conjugated synthetic peptide between 11-39 amino acids from the N-terminal region of human AGR2.
Dilution	WB~~1:1000 IF~~1:10~50 IHC-P~~1:100~500 E~~Use at an assay dependent concentration.
Format	Purified polyclonal antibody supplied in PBS with 0.09% (W/V) sodium azide. This antibody is purified through a protein A column, followed by peptide affinity purification.
Storage	Maintain refrigerated at 2-8°C for up to 2 weeks. For long term storage store at -20°C in small aliquots to prevent freeze-thaw cycles.
Precautions	AGR2 Antibody (N-term) is for research use only and not for use in diagnostic or therapeutic procedures.

Protein Information

Name	AGR2
Synonyms	AG2

Function	Required for MUC2 post-transcriptional synthesis and secretion. May play a role in the production of mucus by intestinal cells (By similarity). Proto-oncogene that may play a role in cell migration, cell differentiation and cell growth. Promotes cell adhesion (PubMed: 23274113).
Cellular Location	Secreted. Endoplasmic reticulum {ECO:0000250 UniProtKB:O88312}
Tissue Location	Expressed strongly in trachea, lung, stomach, colon, prostate and small intestine. Expressed weakly in pituitary gland, salivary gland, mammary gland, bladder, appendix, ovary, fetal lung, uterus, pancreas, kidney, fetal kidney, testis, placenta, thyroid gland and in estrogen receptor (ER)-positive breast cancer cell lines

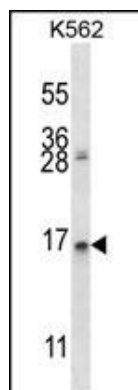
Background

Required for MUC2 post-transcriptional synthesis and secretion. May play a role in the production of mucus by intestinal cells (By similarity). Proto-oncogene that may play a role in cell migration, cell differentiation and cell growth.

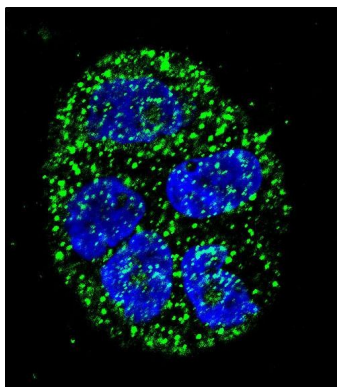
References

Ambolet-Camoit, A., et al. Toxicol. Sci. 115(2):501-512(2010)
Lipkin, S.M., et al. Cancer Prev Res (Phila) 3(5):597-603(2010)
Chen, R., et al. Mol. Cancer 9, 149 (2010) :
Vanderlaag, K.E., et al. Breast Cancer Res. 12 (3), R32 (2010) :
Rice, G.E., et al. J. Exp. Clin. Cancer Res. 29, 62 (2010) :

Images

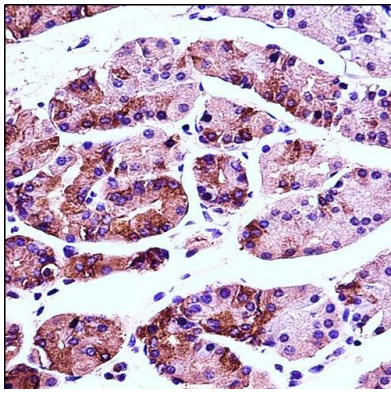


AGR2 Antibody (N-term) (Cat. #AP13845a) western blot analysis in K562 cell line lysates (35ug/lane). This demonstrates the AGR2 antibody detected the AGR2 protein (arrow).



Confocal immunofluorescent analysis of AGR2 Antibody (N-term)(Cat#AP13845a) with WiDr cell followed by Alexa Fluor 488-conjugated goat anti-rabbit IgG (green). DAPI was used to stain the cell nuclear (blue).

AGR2 Antibody (N-term) (Cat. #AP13845a) immunohistochemistry analysis in formalin



fixed and paraffin embedded human stomach tissue followed by peroxidase conjugation of the secondary antibody and DAB staining. This data demonstrates the use of AGR2 Antibody (N-term) for immunohistochemistry. Clinical relevance has not been evaluated.

Please note: All products are 'FOR RESEARCH USE ONLY. NOT FOR USE IN DIAGNOSTIC OR THERAPEUTIC PROCEDURES'.