

# OCLN Antibody (C-term)

Affinity Purified Rabbit Polyclonal Antibody (Pab)

Catalog # AP13901b

## Product Information

---

<b>Application</b>	WB, E
<b>Primary Accession</b>	<a href="#">Q16625</a>
<b>Other Accession</b>	<a href="#">Q61146</a> , <a href="#">NP_002529.1</a>
<b>Reactivity</b>	Human
<b>Predicted</b>	Mouse
<b>Host</b>	Rabbit
<b>Clonality</b>	Polyclonal
<b>Isotype</b>	Rabbit IgG
<b>Clone Names</b>	RB34042
<b>Calculated MW</b>	59144
<b>Antigen Region</b>	446-474

## Additional Information

---

<b>Gene ID</b>	100506658
<b>Other Names</b>	Occludin, OCLN
<b>Target/Specificity</b>	This OCLN antibody is generated from rabbits immunized with a KLH conjugated synthetic peptide between 446-474 amino acids from the C-terminal region of human OCLN.
<b>Dilution</b>	WB~~1:1000 E~~Use at an assay dependent concentration.
<b>Format</b>	Purified polyclonal antibody supplied in PBS with 0.09% (W/V) sodium azide. This antibody is purified through a protein A column, followed by peptide affinity purification.
<b>Storage</b>	Maintain refrigerated at 2-8°C for up to 2 weeks. For long term storage store at -20°C in small aliquots to prevent freeze-thaw cycles.
<b>Precautions</b>	OCLN Antibody (C-term) is for research use only and not for use in diagnostic or therapeutic procedures.

## Protein Information

---

<b>Name</b>	OCLN
<b>Function</b>	May play a role in the formation and regulation of the tight junction (TJ) paracellular permeability barrier. It is able to induce adhesion when expressed in cells lacking tight junctions.

<b>Cellular Location</b>	Cell membrane; Multi-pass membrane protein. Cell junction, tight junction
<b>Tissue Location</b>	Localized at tight junctions of both epithelial and endothelial cells. Highly expressed in kidney. Not detected in testis

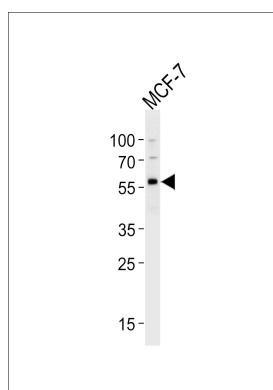
## Background

This gene encodes an integral membrane protein which is located at tight junctions. This protein may be involved in the formation and maintenance of the tight junction. The possibility of several alternatively spliced products has been suggested but the full nature of these products has not been described. [provided by RefSeq].

## References

Liu, S., et al. Virology 407(1):160-170(2010)  
 Michta, M.L., et al. J. Virol. 84(22):11696-11708(2010)  
 O'Driscoll, M.C., et al. Am. J. Hum. Genet. 87(3):354-364(2010)  
 Van Itallie, C.M., et al. J. Cell. Sci. 123 (PT 16), 2844-2852 (2010) :  
 Raikwar, N.S., et al. Am. J. Physiol. Renal Physiol. 299 (2), F436-F444 (2010) :

## Images



Western blot analysis of lysate from MCF-7 cell line, using OCLN Antibody (C-term)(Cat. #AP13901b). AP13901b was diluted at 1:1000 at each lane. A goat anti-rabbit IgG H&L(HRP) at 1:5000 dilution was used as the secondary antibody. Lysate at 35ug per lane.

Please note: All products are 'FOR RESEARCH USE ONLY. NOT FOR USE IN DIAGNOSTIC OR THERAPEUTIC PROCEDURES'.