

Mouse Nim1 Antibody (C-term)

Affinity Purified Rabbit Polyclonal Antibody (Pab)

Catalog # AP13928b

Product Information

Application	WB, E
Primary Accession	Q8BHI9
Other Accession	NP_780747.1 , XP_001475301.1
Reactivity	Human, Mouse
Host	Rabbit
Clonality	Polyclonal
Isotype	Rabbit IgG
Clone Names	RB34650
Calculated MW	49777
Antigen Region	352-380

Additional Information

Gene ID	245269
Other Names	Serine/threonine-protein kinase NIM1, NIM1 serine/threonine-protein kinase, Nim1k, Nim1
Target/Specificity	This Mouse Nim1 antibody is generated from rabbits immunized with a KLH conjugated synthetic peptide between 352-380 amino acids from the C-terminal region of mouse Nim1.
Dilution	WB~~1:1000 E~~Use at an assay dependent concentration.
Format	Purified polyclonal antibody supplied in PBS with 0.09% (W/V) sodium azide. This antibody is purified through a protein A column, followed by peptide affinity purification.
Storage	Maintain refrigerated at 2-8°C for up to 2 weeks. For long term storage store at -20°C in small aliquots to prevent freeze-thaw cycles.
Precautions	Mouse Nim1 Antibody (C-term) is for research use only and not for use in diagnostic or therapeutic procedures.

Protein Information

Name	Nim1k
Synonyms	Nim1

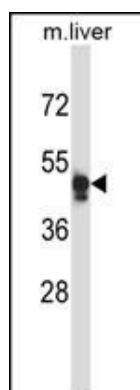
Background

Serine/threonine-protein kinase NIM1 belongs to the protein kinase superfamily, CAMK Ser/Thr protein kinase family. It contains one protein kinase domain.

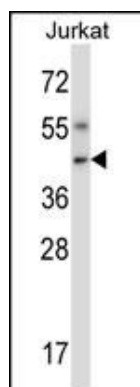
References

Blackshaw, S., et al. PLoS Biol. 2 (9), E247 (2004) :

Images



Mouse Nim1 Antibody (C-term) (Cat. #AP13928b) western blot analysis in mouse liver tissue lysates (35ug/lane). This demonstrates the Nim1 antibody detected the Nim1 protein (arrow).



Mouse Nim1 Antibody (C-term) (Cat. #AP13928b) western blot analysis in Jurkat cell line lysates (35ug/lane). This demonstrates the Nim1 antibody detected the Nim1 protein (arrow).

Please note: All products are 'FOR RESEARCH USE ONLY. NOT FOR USE IN DIAGNOSTIC OR THERAPEUTIC PROCEDURES'.