

# LYPL1 Antibody (Center)

Affinity Purified Rabbit Polyclonal Antibody (Pab)

Catalog # AP13955c

## Product Information

---

Application	WB, IHC-P, FC, E
Primary Accession	<a href="#">Q5VWZ2</a>
Other Accession	<a href="#">NP_620149.1</a>
Reactivity	Human, Mouse
Host	Rabbit
Clonality	Polyclonal
Isotype	Rabbit IgG
Clone Names	RB26246
Calculated MW	26316
Antigen Region	88-117

## Additional Information

---

Gene ID	127018
Other Names	Lysophospholipase-like protein 1, 312-, LYPLAL1
Target/Specificity	This LYPL1 antibody is generated from rabbits immunized with a KLH conjugated synthetic peptide between 88-117 amino acids from the Central region of human LYPL1.
Dilution	WB~~1:1000 IHC-P~~1:100~500 FC~~1:10~50 E~~Use at an assay dependent concentration.
Format	Purified polyclonal antibody supplied in PBS with 0.09% (W/V) sodium azide. This antibody is purified through a protein A column, followed by peptide affinity purification.
Storage	Maintain refrigerated at 2-8°C for up to 2 weeks. For long term storage store at -20°C in small aliquots to prevent freeze-thaw cycles.
Precautions	LYPL1 Antibody (Center) is for research use only and not for use in diagnostic or therapeutic procedures.

## Protein Information

---

Name	LYPLAL1 {ECO:0000303 PubMed:37802025, ECO:0000312 HGNC:HGNC:20440}
Function	Palmitoyl thioesterase that catalyzes depalmitoylation of CGAS and KCNMA1 (PubMed: <a href="#">22052940</a> , PubMed: <a href="#">22399288</a> , PubMed: <a href="#">37802025</a> ). Acts as a

regulator of innate immunity by mediating depalmitoylation of CGAS, thereby preventing CGAS homodimerization and cyclic GMP-AMP synthase activity (PubMed:[37802025](#)). Does not exhibit phospholipase nor triacylglycerol lipase activity, able to hydrolyze only short chain substrates due to its shallow active site (PubMed:[22052940](#)).

**Cellular Location** [Isoform 1]: Cytoplasm, cytosol

## Background

---

The exact function of this protein remains unknown.

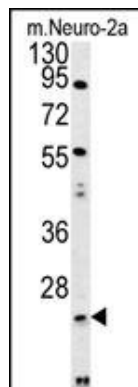
## References

---

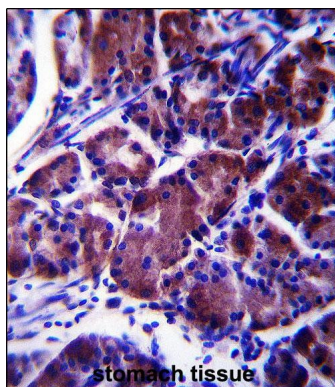
Hotta, K., et al. J. Hum. Genet. (2010) In press :  
Lindgren, C.M., et al. PLoS Genet. 5 (6), E1000508 (2009) :  
David, D., et al. Genomics 81(5):489-503(2003)

## Images

---

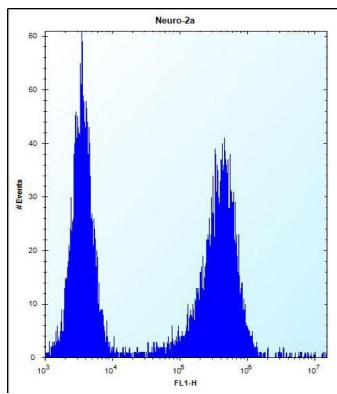


LYPL1 Antibody (Center) (Cat. #AP13955c) western blot analysis in mouse Neuro-2a cell line lysates (35ug/lane). This demonstrates the LYPL1 antibody detected the LYPL1 protein (arrow).



LYPL1 Antibody (Center) (Cat. #AP13955c) immunohistochemistry analysis in formalin fixed and paraffin embedded human stomach tissue followed by peroxidase conjugation of the secondary antibody and DAB staining. This data demonstrates the use of LYPL1 Antibody (Center) for immunohistochemistry. Clinical relevance has not been evaluated.

LYPL1 Antibody (Center) (Cat. #AP13955c) flow cytometric analysis of Neuro-2a cells (right histogram) compared to a negative control cell (left histogram). FITC-conjugated donkey-anti-rabbit secondary antibodies were used for the analysis.



Please note: All products are 'FOR RESEARCH USE ONLY. NOT FOR USE IN DIAGNOSTIC OR THERAPEUTIC PROCEDURES'.