

# VASH2 Antibody (C-term)

Affinity Purified Rabbit Polyclonal Antibody (Pab)

Catalog # AP13956b

## Product Information

---

<b>Application</b>	WB, FC, E
<b>Primary Accession</b>	<a href="#">Q86V25</a>
<b>Other Accession</b>	<a href="#">Q8C5G2</a> , <a href="#">NP_001129946.1</a> , <a href="#">NP_079025.2</a>
<b>Reactivity</b>	Human, Mouse
<b>Host</b>	Rabbit
<b>Clonality</b>	Polyclonal
<b>Isotype</b>	Rabbit IgG
<b>Clone Names</b>	RB26261
<b>Calculated MW</b>	40450
<b>Antigen Region</b>	216-245

## Additional Information

---

<b>Gene ID</b>	79805
<b>Other Names</b>	Vasohibin-2, Vasohibin-like protein, VASH2, VASHL
<b>Target/Specificity</b>	This VASH2 antibody is generated from rabbits immunized with a KLH conjugated synthetic peptide between 216-245 amino acids from the C-terminal region of human VASH2.
<b>Dilution</b>	WB~~1:1000 FC~~1:10~50 E~~Use at an assay dependent concentration.
<b>Format</b>	Purified polyclonal antibody supplied in PBS with 0.09% (W/V) sodium azide. This antibody is purified through a protein A column, followed by peptide affinity purification.
<b>Storage</b>	Maintain refrigerated at 2-8°C for up to 2 weeks. For long term storage store at -20°C in small aliquots to prevent freeze-thaw cycles.
<b>Precautions</b>	VASH2 Antibody (C-term) is for research use only and not for use in diagnostic or therapeutic procedures.

## Protein Information

---

<b>Name</b>	VASH2 ( <a href="#">HGNC:25723</a> )
<b>Synonyms</b>	VASHL
<b>Function</b>	Tyrosine carboxypeptidase that removes the C-terminal tyrosine residue of alpha-tubulin, thereby regulating microtubule dynamics and function

(PubMed:[29146869](#)). Critical for spindle function and accurate chromosome segregation during mitosis since microtubule detyronisation regulates mitotic spindle length and positioning (PubMed:[31171830](#)). Acts as an activator of angiogenesis: expressed in infiltrating mononuclear cells in the sprouting front to promote angiogenesis (PubMed:[19204325](#)). Plays a role in axon formation (PubMed:[31235911](#)).

### Cellular Location

Cytoplasm. Secreted. Cytoplasm, cytoskeleton. Note=Mainly localizes in the cytoplasm (PubMed:[19204325](#)). Some fraction is secreted via a non-canonical secretion system; interaction with SVBP promotes secretion (PubMed:[20736312](#)). Associates with microtubules (PubMed:[31235911](#))

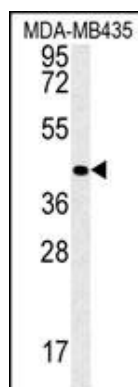
## Background

VASH2 is a angiogenesis inhibitor. It inhibits network formation by endothelial cells.

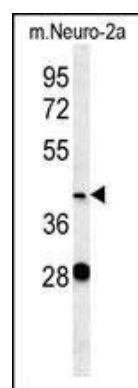
## References

Kimura, H., et al. Blood 113(19):4810-4818(2009)  
Shibuya, T., et al. Arterioscler. Thromb. Vasc. Biol. 26(5):1051-1057(2006)

## Images

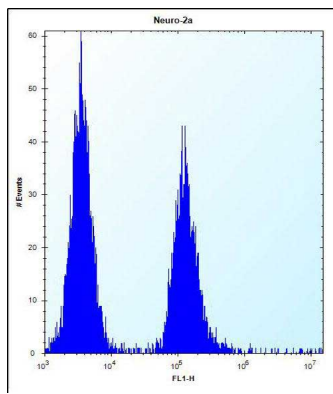


VASH2 Antibody (C-term) (Cat. #AP13956b) western blot analysis in MDA-MB435 cell line lysates (35ug/lane). This demonstrates the VASH2 antibody detected the VASH2 protein (arrow).



VASH2 Antibody (C-term) (Cat. #AP13956b) western blot analysis in mouse Neuro-2a cell line lysates (35ug/lane). This demonstrates the VASH2 antibody detected the VASH2 protein (arrow).

VASH2 Antibody (C-term) (Cat. #AP13956b) flow cytometric analysis of Neuro-2a cells (right histogram) compared to a negative control cell (left histogram). FITC-conjugated donkey-anti-rabbit secondary antibodies were used for the analysis.



Please note: All products are 'FOR RESEARCH USE ONLY. NOT FOR USE IN DIAGNOSTIC OR THERAPEUTIC PROCEDURES'.