

# GDPD3 Antibody (N-term)

Affinity Purified Rabbit Polyclonal Antibody (Pab)

Catalog # AP13964A

## Product Information

---

<b>Application</b>	WB, IHC-P, E
<b>Primary Accession</b>	<a href="#">Q7L5L3</a>
<b>Other Accession</b>	<a href="#">NP_077283.2</a>
<b>Reactivity</b>	Human
<b>Host</b>	Rabbit
<b>Clonality</b>	Polyclonal
<b>Isotype</b>	Rabbit IgG
<b>Clone Names</b>	RB27411
<b>Calculated MW</b>	36596
<b>Antigen Region</b>	17-46

## Additional Information

---

<b>Gene ID</b>	79153
<b>Other Names</b>	Glycerophosphodiester phosphodiesterase domain-containing protein 3, 31--, GDPD3
<b>Target/Specificity</b>	This GDPD3 antibody is generated from rabbits immunized with a KLH conjugated synthetic peptide between 17-46 amino acids from the N-terminal region of human GDPD3.
<b>Dilution</b>	WB~~1:1000 IHC-P~~1:100~500 E~~Use at an assay dependent concentration.
<b>Format</b>	Purified polyclonal antibody supplied in PBS with 0.09% (W/V) sodium azide. This antibody is purified through a protein A column, followed by peptide affinity purification.
<b>Storage</b>	Maintain refrigerated at 2-8°C for up to 2 weeks. For long term storage store at -20°C in small aliquots to prevent freeze-thaw cycles.
<b>Precautions</b>	GDPD3 Antibody (N-term) is for research use only and not for use in diagnostic or therapeutic procedures.

## Protein Information

---

<b>Name</b>	GDPD3 ( <a href="#">HGNC:28638</a> )
<b>Function</b>	Hydrolyzes lysoglycerophospholipids to produce lysophosphatidic acid (LPA) and the corresponding amines (PubMed: <a href="#">27637550</a> ). Shows a preference for 1-O-alkyl-sn-glycero-3- phosphocholine (lyso-PAF), lysophosphatidylcholine

(lyso-PC) and N- acylethanolamine lysophospholipids (PubMed:[27637550](#)). Does not display glycerophosphodiester phosphodiesterase activity, since it cannot hydrolyze either glycerophosphoinositol or glycerophosphocholine.

#### Cellular Location

Membrane {ECO:0000250|UniProtKB:Q99LY2}; Multi- pass membrane protein {ECO:0000250|UniProtKB:Q99LY2}. Cytoplasm, perinuclear region {ECO:0000250|UniProtKB:Q99LY2}. Endoplasmic reticulum. Note=Partially co-localized with CANX. {ECO:0000250|UniProtKB:Q99LY2}

#### Tissue Location

Widely expressed, with high level in kidney and ovary.

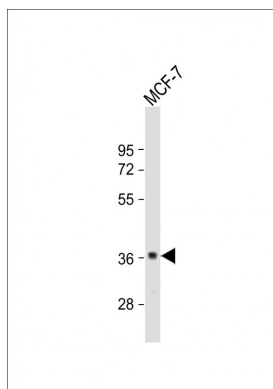
## Background

The exact function of this protein remains unknown.

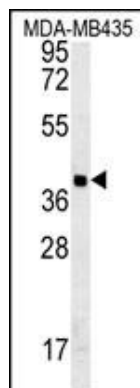
## References

Gerhard, D.S., et al. Genome Res. 14 (10B), 2121-2127 (2004) :

## Images

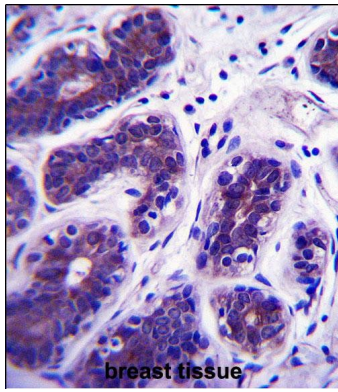


Anti-GDPD3 Antibody (N-term) at 1:1000 dilution + MCF-7 whole cell lysates. Lysates/proteins at 20 µg per lane. Secondary Goat Anti-Rabbit IgG, (H+L), Peroxidase conjugated at 1/10000 dilution. Predicted band size : 36 kDa. Blocking/Dilution buffer: 5% NFDM/TBST.



GDPD3 Antibody (N-term) (Cat. #AP13964a) western blot analysis in MDA-MB435 cell line lysates (35ug/lane). This demonstrates the GDPD3 antibody detected the GDPD3 protein (arrow).

GDPD3 Antibody (N-term) (Cat. #AP13964a) immunohistochemistry analysis in formalin fixed and paraffin embedded human breast tissue followed by peroxidase conjugation of the secondary antibody and DAB staining. This data demonstrates the use of GDPD3 Antibody (N-term) for immunohistochemistry. Clinical relevance has not been evaluated.



Please note: All products are 'FOR RESEARCH USE ONLY. NOT FOR USE IN DIAGNOSTIC OR THERAPEUTIC PROCEDURES'.