

C4orf18 Antibody (Center)

Affinity Purified Rabbit Polyclonal Antibody (Pab)

Catalog # AP13966c

Product Information

Application	WB, E
Primary Accession	Q6UWH4
Other Accession	NP_001121896.1 , NP_057697.2 , NP_001026870.2
Reactivity	Human
Host	Rabbit
Clonality	Polyclonal
Isotype	Rabbit IgG
Clone Names	RB30264
Calculated MW	57552
Antigen Region	275-304

Additional Information

Gene ID	51313
Other Names	Protein FAM198B, Expressed in nerve and epithelium during development, FAM198B, C4orf18, ENED
Target/Specificity	This C4orf18 antibody is generated from rabbits immunized with a KLH conjugated synthetic peptide between 275-304 amino acids from the Central region of human C4orf18.
Dilution	WB~~1:1000 E~~Use at an assay dependent concentration.
Format	Purified polyclonal antibody supplied in PBS with 0.09% (W/V) sodium azide. This antibody is purified through a protein A column, followed by peptide affinity purification.
Storage	Maintain refrigerated at 2-8°C for up to 2 weeks. For long term storage store at -20°C in small aliquots to prevent freeze-thaw cycles.
Precautions	C4orf18 Antibody (Center) is for research use only and not for use in diagnostic or therapeutic procedures.

Protein Information

Name	GASK1B (HGNC:25312)
Cellular Location	Golgi apparatus membrane; Single-pass type II membrane protein

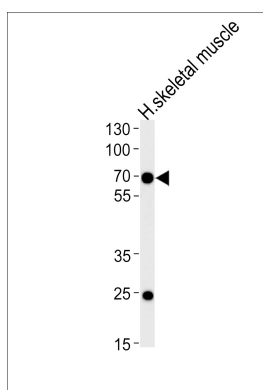
Background

The exact function of this protein remains unknown.

References

Clark, H.F., et al. Genome Res. 13(10):2265-2270(2003)
Simpson, J.C., et al. EMBO Rep. 1(3):287-292(2000)

Images



Western blot analysis of lysate from human skeletal muscle tissue lysate, using C4orf18 Antibody (Center)(Cat. #AP13966c). AP13966c was diluted at 1:1000 at each lane. A goat anti-rabbit IgG H&L(HRP) at 1:5000 dilution was used as the secondary antibody. Lysate at 35ug per lane.

Please note: All products are 'FOR RESEARCH USE ONLY. NOT FOR USE IN DIAGNOSTIC OR THERAPEUTIC PROCEDURES'.