

HTRA3 Antibody (Center)

Affinity Purified Rabbit Polyclonal Antibody (Pab)

Catalog # AP13989c

Product Information

Application	WB, IHC-P, E
Primary Accession	P83110
Other Accession	NP_444272.1
Reactivity	Human, Rat, Mouse
Host	Rabbit
Clonality	Polyclonal
Isotype	Rabbit IgG
Clone Names	RB33741
Calculated MW	48608
Antigen Region	262-290

Additional Information

Gene ID	94031
Other Names	Serine protease HTRA3, 3421-, High-temperature requirement factor A3, Pregnancy-related serine protease, HTRA3, PRSP
Target/Specificity	This HTRA3 antibody is generated from rabbits immunized with a KLH conjugated synthetic peptide between 262-290 amino acids from the Central region of human HTRA3.
Dilution	WB~~1:1000 IHC-P~~1:100~500 E~~Use at an assay dependent concentration.
Format	Purified polyclonal antibody supplied in PBS with 0.05% (V/V) Proclin 300. This antibody is prepared by Saturated Ammonium Sulfate (SAS) precipitation followed by dialysis against PBS.
Storage	Maintain refrigerated at 2-8°C for up to 2 weeks. For long term storage store at -20°C in small aliquots to prevent freeze-thaw cycles.
Precautions	HTRA3 Antibody (Center) is for research use only and not for use in diagnostic or therapeutic procedures.

Protein Information

Name	HTRA3
Synonyms	PRSP
Function	Serine protease that cleaves beta-casein/CSN2 as well as several

extracellular matrix (ECM) proteoglycans such as decorin/DCN, biglycan/BGN and fibronectin/FN1. Inhibits signaling mediated by TGF- beta family proteins possibly indirectly by degradation of these ECM proteoglycans (By similarity). May act as a tumor suppressor. Negatively regulates, in vitro, trophoblast invasion during placental development and may be involved in the development of the placenta in vivo. May also have a role in ovarian development, granulosa cell differentiation and luteinization (PubMed:[21321049](#), PubMed:[22229724](#)).

Cellular Location

Secreted. Note=Secretion increased during decidualization of endometrial stromal cells

Tissue Location

Widely expressed, with highest levels in both adult and fetal heart, ovary, uterus placenta, and bladder. In the endometrium, expressed in epithelial glands and the stroma. Also present in leukocytes. Isoform 1 is predominant in heart and skeletal muscle, whereas isoform 2 is predominant in placenta and kidney

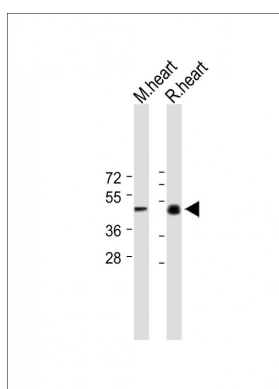
Background

HTRA3 is probable serine protease.

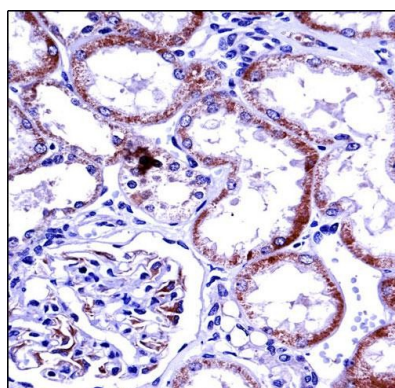
References

Zurawa-Janicka, D., et al. Expert Opin. Ther. Targets 14(7):665-679(2010)
 Rose, J.E., et al. Mol. Med. 16 (7-8), 247-253 (2010) :
 Belefors, D., et al. J. Biol. Chem. 285(16):12011-12027(2010)
 Theoleyre, S., et al. Biochem. Biophys. Res. Commun. 394(3):453-458(2010)
 Belefors, D., et al. Clin. Cancer Res. 16(2):398-409(2010)

Images



All lanes : Anti-HTRA3 Antibody (Center) at 1:1000 dilution
 Lane 1: mouse heart lysate Lane 2: rat heart lysate
 Lysates/proteins at 20 µg per lane. Secondary Goat Anti-Rabbit IgG, (H+L), Peroxidase conjugated (ASP1615) at 1/15000 dilution. Observed band size : 48kDa
 Blocking/Dilution buffer: 5% NFDm/TBST.



HTRA3 Antibody (Center)
 (AP13989c) immunohistochemistry analysis in formalin fixed and paraffin embedded human kidney tissue followed by peroxidase conjugation of the secondary antibody and DAB staining. This data demonstrates the use of HTRA3 Antibody (Center) for immunohistochemistry. Clinical relevance has not been evaluated.

Please note: All products are 'FOR RESEARCH USE ONLY. NOT FOR USE IN DIAGNOSTIC OR THERAPEUTIC PROCEDURES'.