

# CELA2A Antibody (C-term)

Affinity Purified Rabbit Polyclonal Antibody (Pab)

Catalog # AP14005b

## Product Information

---

Application	WB, E
Primary Accession	<a href="#">P08217</a>
Other Accession	<a href="#">P08419</a> , <a href="#">NP_254275.1</a>
Reactivity	Human
Predicted	Pig
Host	Rabbit
Clonality	Polyclonal
Isotype	Rabbit IgG
Clone Names	RB33880
Calculated MW	28888
Antigen Region	231-260

## Additional Information

---

Gene ID	63036
Other Names	Chymotrypsin-like elastase family member 2A, Elastase-2A, CELA2A, ELA2A
Target/Specificity	This CELA2A antibody is generated from rabbits immunized with a KLH conjugated synthetic peptide between 231-260 amino acids from the C-terminal region of human CELA2A.
Dilution	WB~~1:1000 E~~Use at an assay dependent concentration.
Format	Purified polyclonal antibody supplied in PBS with 0.09% (W/V) sodium azide. This antibody is purified through a protein A column, followed by peptide affinity purification.
Storage	Maintain refrigerated at 2-8°C for up to 2 weeks. For long term storage store at -20°C in small aliquots to prevent freeze-thaw cycles.
Precautions	CELA2A Antibody (C-term) is for research use only and not for use in diagnostic or therapeutic procedures.

## Protein Information

---

Name	CELA2A ( <a href="#">HGNC:24609</a> )
Synonyms	ELA2A
Function	Elastase that enhances insulin signaling and might have a physiologic role in

cellular glucose metabolism. Circulates in plasma and reduces platelet hyperactivation, triggers both insulin secretion and degradation, and increases insulin sensitivity.

**Cellular Location**

Secreted.

**Tissue Location**

Expressed in pancreas. Not detected in keratinocytes (PubMed:10620133). Detected in exocrine secretions of the pancreas (at protein level). Also expressed in a small fraction of cells in pancreatic islets, adrenal cortex, intestinal glands and colonic lymphoid follicles (at protein level) (PubMed:31358993) Detected in plasma (PubMed:31358993).

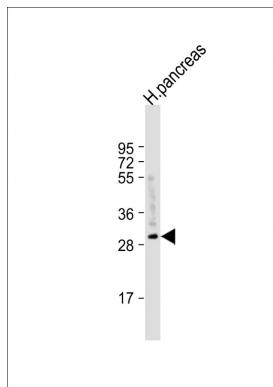
## Background

Elastases form a subfamily of serine proteases that hydrolyze many proteins in addition to elastin. Humans have six elastase genes which encode the structurally similar proteins elastase 1, 2, 2A, 2B, 3A, and 3B. Like most of the human elastases, elastase 2A is secreted from the pancreas as a zymogen. In other species, elastase 2A has been shown to preferentially cleave proteins after leucine, methionine, and phenylalanine residues.

## References

Bailey, S.D., et al. Diabetes Care 33(10):2250-2253(2010)  
Talmud, P.J., et al. Am. J. Hum. Genet. 85(5):628-642(2009)  
Lamesch, P., et al. Genomics 89(3):307-315(2007)  
Lausen, J., et al. Oncogene 25(9):1349-1357(2006)  
Szepessy, E., et al. Pancreatology 6 (1-2), 117-122 (2006) :

## Images



Anti-CELA2A Antibody (C-term) at 1:1000 dilution + human pancreas lysate Lysates/proteins at 20 µg per lane. Secondary Goat Anti-Rabbit IgG, (H+L), Peroxidase conjugated at 1/10000 dilution. Predicted band size : 29 kDa Blocking/Dilution buffer: 5% NFDM/TBST.

## Citations

- [Endothelial-Mesenchymal Transition in Vascular Calcification of Ins2Akita/+ Mice.](#)
- [Serine Protease Activation Essential for Endothelial-Mesenchymal Transition in Vascular Calcification.](#)

Please note: All products are 'FOR RESEARCH USE ONLY. NOT FOR USE IN DIAGNOSTIC OR THERAPEUTIC PROCEDURES'.