

SSTR1 Antibody (C-term)

Affinity Purified Rabbit Polyclonal Antibody (Pab)

Catalog # AP14037b

Product Information

Application	WB, E
Primary Accession	P30872
Other Accession	P28646 , P30873 , NP_001040.1
Reactivity	Mouse
Predicted	Rat
Host	Rabbit
Clonality	Polyclonal
Isotype	Rabbit IgG
Clone Names	RB34075
Calculated MW	42686
Antigen Region	351-380

Additional Information

Gene ID	6751
Other Names	Somatostatin receptor type 1, SS-1-R, SS1-R, SS1R, SRIF-2, SSTR1
Target/Specificity	This SSTR1 antibody is generated from rabbits immunized with a KLH conjugated synthetic peptide between 351-380 amino acids from the C-terminal region of human SSTR1.
Dilution	WB~~1:1000 E~~Use at an assay dependent concentration.
Format	Purified polyclonal antibody supplied in PBS with 0.09% (W/V) sodium azide. This antibody is purified through a protein A column, followed by peptide affinity purification.
Storage	Maintain refrigerated at 2-8°C for up to 2 weeks. For long term storage store at -20°C in small aliquots to prevent freeze-thaw cycles.
Precautions	SSTR1 Antibody (C-term) is for research use only and not for use in diagnostic or therapeutic procedures.

Protein Information

Name	SSTR1
Function	Receptor for somatostatin with higher affinity for somatostatin-14 than -28. This receptor is coupled via pertussis toxin sensitive G proteins to inhibition of adenylyl cyclase. In addition it stimulates phosphotyrosine phosphatase

and Na(+)/H(+) exchanger via pertussis toxin insensitive G proteins.

Cellular Location

Cell membrane; Multi-pass membrane protein.

Tissue Location

Fetal kidney, fetal liver, and adult pancreas, brain, lung, jejunum and stomach

Background

Somatostatin acts at many sites to inhibit the release of many hormones and other secretory proteins. The biological effects of somatostatin are probably mediated by a family of G protein-coupled receptors that are expressed in a tissue-specific manner. The encoded protein is a member of the superfamily of somatostatin receptors having seven transmembrane segments, and is expressed in highest levels in jejunum and stomach. [provided by RefSeq].

References

Canzian, F., et al. Hum. Mol. Genet. 19(19):3873-3884(2010)

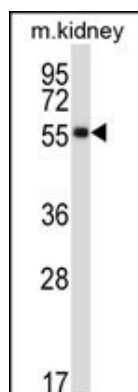
Liu, C.Y., et al. Carcinogenesis 31(7):1259-1263(2010)

Pisarek, H., et al. Folia Histochem. Cytobiol. 48(1):142-147(2010)

Johansson, M., et al. Cancer Epidemiol. Biomarkers Prev. 18(5):1644-1650(2009)

Casarini, A.P., et al. Pituitary 12(4):297-303(2009)

Images



SSTR1 Antibody (C-term) (Cat. #AP14037b) western blot analysis in mouse kidney tissue lysates (35ug/lane). This demonstrates the SSTR1 antibody detected the SSTR1 protein (arrow).

Please note: All products are 'FOR RESEARCH USE ONLY. NOT FOR USE IN DIAGNOSTIC OR THERAPEUTIC PROCEDURES'.