

HCLS1 Antibody (C-term)

Affinity Purified Rabbit Polyclonal Antibody (Pab)

Catalog # AP14038B

Product Information

Application	WB, IHC-P, E
Primary Accession	P14317
Other Accession	NP_005326.2
Reactivity	Human, Mouse
Host	Rabbit
Clonality	Polyclonal
Isotype	Rabbit IgG
Clone Names	RB34076
Calculated MW	54014
Antigen Region	362-391

Additional Information

Gene ID	3059
Other Names	Hematopoietic lineage cell-specific protein, Hematopoietic cell-specific LYN substrate 1, LckBP1, p75, HCLS1, HS1
Target/Specificity	This HCLS1 antibody is generated from rabbits immunized with a KLH conjugated synthetic peptide between 362-391 amino acids from the C-terminal region of human HCLS1.
Dilution	WB~~1:1000 IHC-P~~1:100~500 E~~Use at an assay dependent concentration.
Format	Purified polyclonal antibody supplied in PBS with 0.09% (W/V) sodium azide. This antibody is purified through a protein A column, followed by peptide affinity purification.
Storage	Maintain refrigerated at 2-8°C for up to 2 weeks. For long term storage store at -20°C in small aliquots to prevent freeze-thaw cycles.
Precautions	HCLS1 Antibody (C-term) is for research use only and not for use in diagnostic or therapeutic procedures.

Protein Information

Name	HCLS1
Synonyms	HS1
Function	Substrate of the antigen receptor-coupled tyrosine kinase. Plays a role in

antigen receptor signaling for both clonal expansion and deletion in lymphoid cells. May also be involved in the regulation of gene expression.

Cellular Location

Membrane; Peripheral membrane protein. Cytoplasm. Mitochondrion

Tissue Location

Expressed only in tissues and cells of hematopoietic origin

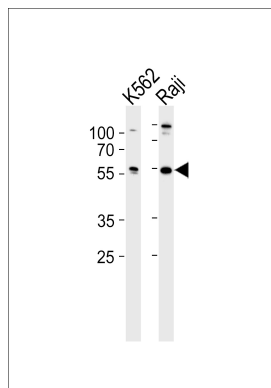
Background

Substrate of the antigen receptor-coupled tyrosine kinase. Plays a role in antigen receptor signaling for both clonal expansion and deletion in lymphoid cells. May also be involved in the regulation of gene expression.

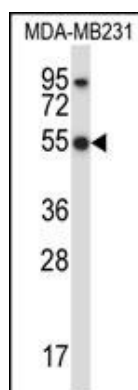
References

Muzio, M., et al. Leukemia 21(9):2067-2070(2007)
Lim, J., et al. Cell 125(4):801-814(2006)
Hao, J.J., et al. J. Biol. Chem. 280(45):37988-37994(2005)
Tao, W.A., et al. Nat. Methods 2(8):591-598(2005)
Brunati, A.M., et al. J. Biol. Chem. 280(22):21029-21035(2005)

Images

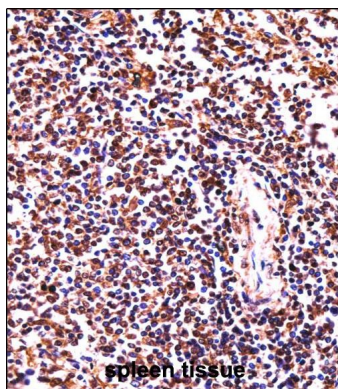


Western blot analysis of lysates from K562, Raji cell line (from left to right), using HCLS1 Antibody (C-term)(Cat. #AP14038b). AP14038b was diluted at 1:1000 at each lane. A goat anti-rabbit IgG H&L(HRP) at 1:5000 dilution was used as the secondary antibody. Lysates at 35ug per lane.



HCLS1 Antibody (C-term) (Cat. #AP14038b) western blot analysis in MDA-MB231 cell line lysates (35ug/lane). This demonstrates the HCLS1 antibody detected the HCLS1 protein (arrow).

HCLS1 Antibody (C-term) (AP14038b) immunohistochemistry analysis in formalin fixed and paraffin embedded human spleen tissue followed by peroxidase conjugation of the secondary antibody and DAB staining. This data demonstrates the use of HCLS1 Antibody (C-term) for immunohistochemistry. Clinical relevance has not been evaluated.



Please note: All products are 'FOR RESEARCH USE ONLY. NOT FOR USE IN DIAGNOSTIC OR THERAPEUTIC PROCEDURES'.