

STAM2 Antibody (Center)

Affinity Purified Rabbit Polyclonal Antibody (Pab)

Catalog # AP14042c

Product Information

Application	WB, E
Primary Accession	O75886
Other Accession	NP_005834.4
Reactivity	Human
Host	Rabbit
Clonality	Polyclonal
Isotype	Rabbit IgG
Clone Names	RB34085
Calculated MW	58164
Antigen Region	143-172

Additional Information

Gene ID	10254
Other Names	Signal transducing adapter molecule 2, STAM-2, Hrs-binding protein, STAM2, HBP
Target/Specificity	This STAM2 antibody is generated from rabbits immunized with a KLH conjugated synthetic peptide between 143-172 amino acids from the Central region of human STAM2.
Dilution	WB~~1:1000 E~~Use at an assay dependent concentration.
Format	Purified polyclonal antibody supplied in PBS with 0.09% (W/V) sodium azide. This antibody is purified through a protein A column, followed by peptide affinity purification.
Storage	Maintain refrigerated at 2-8°C for up to 2 weeks. For long term storage store at -20°C in small aliquots to prevent freeze-thaw cycles.
Precautions	STAM2 Antibody (Center) is for research use only and not for use in diagnostic or therapeutic procedures.

Protein Information

Name	STAM2
Synonyms	HBP
Function	Involved in intracellular signal transduction mediated by cytokines and

growth factors. Upon IL-2 and GM-CSL stimulation, it plays a role in signaling leading to DNA synthesis and MYC induction. May also play a role in T-cell development. Involved in down-regulation of receptor tyrosine kinase via multivesicular body (MVBs) when complexed with HGS (ESCRT-0 complex). The ESCRT-0 complex binds ubiquitin and acts as a sorting machinery that recognizes ubiquitinated receptors and transfers them to further sequential lysosomal sorting/trafficking processes (By similarity).

Cellular Location

Cytoplasm. Early endosome membrane; Peripheral membrane protein; Cytoplasmic side

Tissue Location

Ubiquitously expressed.

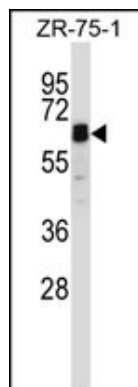
Background

The protein encoded by this gene is closely related to STAM, an adaptor protein involved in the downstream signaling of cytokine receptors, both of which contain a SH3 domain and the immunoreceptor tyrosine-based activation motif (ITAM). Similar to STAM, this protein acts downstream of JAK kinases, and is phosphorylated in response to cytokine stimulation. This protein and STAM thus are thought to exhibit compensatory effects on the signaling pathway downstream of JAK kinases upon cytokine stimulation.

References

Stuible, M., et al. J. Biol. Chem. 285(31):23899-23907(2010)
Rismanchi, N., et al. Traffic 10(2):201-217(2009)
Venkatesan, K., et al. Nat. Methods 6(1):83-90(2009)
Kong, C., et al. J. Biol. Chem. 282(20):15294-15301(2007)
Olsen, J.V., et al. Cell 127(3):635-648(2006)

Images



STAM2 Antibody (Center) (Cat. #AP14042c) western blot analysis in ZR-75-1 cell line lysates (35ug/lane). This demonstrates the STAM2 antibody detected the STAM2 protein (arrow).

Please note: All products are 'FOR RESEARCH USE ONLY. NOT FOR USE IN DIAGNOSTIC OR THERAPEUTIC PROCEDURES'.