

CSTF3 Antibody (C-term)

Affinity Purified Rabbit Polyclonal Antibody (Pab)

Catalog # AP14056b

Product Information

Application	WB, E
Primary Accession	Q12996
Other Accession	Q99LI7 , NP_001317.1
Reactivity	Human
Predicted	Mouse
Host	Rabbit
Clonality	Polyclonal
Isotype	Rabbit IgG
Clone Names	RB34138
Calculated MW	82922
Antigen Region	556-585

Additional Information

Gene ID	1479
Other Names	Cleavage stimulation factor subunit 3, CF-1 77 kDa subunit, Cleavage stimulation factor 77 kDa subunit, CSTF 77 kDa subunit, CstF-77, CSTF3
Target/Specificity	This CSTF3 antibody is generated from rabbits immunized with a KLH conjugated synthetic peptide between 556-585 amino acids from the C-terminal region of human CSTF3.
Dilution	WB~~1:1000 E~~Use at an assay dependent concentration.
Format	Purified polyclonal antibody supplied in PBS with 0.09% (W/V) sodium azide. This antibody is purified through a protein A column, followed by peptide affinity purification.
Storage	Maintain refrigerated at 2-8°C for up to 2 weeks. For long term storage store at -20°C in small aliquots to prevent freeze-thaw cycles.
Precautions	CSTF3 Antibody (C-term) is for research use only and not for use in diagnostic or therapeutic procedures.

Protein Information

Name	CSTF3
Function	One of the multiple factors required for polyadenylation and 3'-end cleavage of mammalian pre-mRNAs.

Background

The protein encoded by this gene is one of three (including CSTF1 and CSTF2) cleavage stimulation factors that combine to form the cleavage stimulation factor complex (CSTF). This complex is involved in the polyadenylation and 3' end cleavage of pre-mRNAs. The encoded protein functions as a homodimer and interacts directly with both CSTF1 and CSTF2 in the CSTF complex. Alternative splicing results in multiple transcript variants encoding different isoforms.

References

Hockert, J.A., et al. J. Biol. Chem. 285(1):695-704(2010)

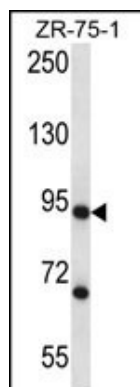
Lamesch, P., et al. Genomics 89(3):307-315(2007)

Ewing, R.M., et al. Mol. Syst. Biol. 3, 89 (2007) :

Olsen, J.V., et al. Cell 127(3):635-648(2006)

Olsen, J.V., et al. Cell 127(3):635-648(2006)

Images



CSTF3 Antibody (C-term) (Cat. #AP14056b) western blot analysis in ZR-75-1 cell line lysates (35ug/lane). This demonstrates the CSTF3 antibody detected the CSTF3 protein (arrow).

Please note: All products are 'FOR RESEARCH USE ONLY. NOT FOR USE IN DIAGNOSTIC OR THERAPEUTIC PROCEDURES'.