

ADAM8 Antibody (N-term)

Affinity Purified Rabbit Polyclonal Antibody (Pab)

Catalog # AP14058a

Product Information

Application	WB, E
Primary Accession	P78325
Reactivity	Human
Host	Rabbit
Clonality	Polyclonal
Isotype	Rabbit IgG
Clone Names	RB34143
Calculated MW	88771
Antigen Region	126-155

Additional Information

Gene ID	101
Other Names	Disintegrin and metalloproteinase domain-containing protein 8, ADAM 8, 3424-, Cell surface antigen MS2, CD156a, ADAM8, MS2
Target/Specificity	This ADAM8 antibody is generated from rabbits immunized with a KLH conjugated synthetic peptide between 126-155 amino acids from the N-terminal region of human ADAM8.
Dilution	WB~~1:1000 E~~Use at an assay dependent concentration.
Format	Purified polyclonal antibody supplied in PBS with 0.09% (W/V) sodium azide. This antibody is purified through a protein A column, followed by peptide affinity purification.
Storage	Maintain refrigerated at 2-8°C for up to 2 weeks. For long term storage store at -20°C in small aliquots to prevent freeze-thaw cycles.
Precautions	ADAM8 Antibody (N-term) is for research use only and not for use in diagnostic or therapeutic procedures.

Protein Information

Name	ADAM8
Synonyms	MS2
Function	Possible involvement in extravasation of leukocytes.

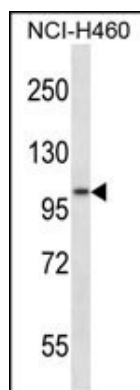
Cellular Location Membrane; Single-pass type I membrane protein.

Tissue Location Expressed on neutrophils and monocytes.

Background

Possible involvement in extravasation of leukocytes.

Images



ADAM8 Antibody (N-term) (Cat. #AP14058a) western blot analysis in NCI-H460 cell line lysates (35ug/lane). This demonstrates the ADAM8 antibody detected the ADAM8 protein (arrow).

Please note: All products are 'FOR RESEARCH USE ONLY. NOT FOR USE IN DIAGNOSTIC OR THERAPEUTIC PROCEDURES'.