

Nucleostemin (GNL3) Antibody (C-term)

Purified Rabbit Polyclonal Antibody (Pab)

Catalog # AP1405b

Product Information

Application	WB, IHC-P, E
Primary Accession	Q9BVP2
Reactivity	Human
Host	Rabbit
Clonality	Polyclonal
Isotype	Rabbit IgG
Clone Names	RB13446
Calculated MW	61993
Antigen Region	458-487

Additional Information

Gene ID	26354
Other Names	Guanine nucleotide-binding protein-like 3, E2-induced gene 3 protein, Novel nucleolar protein 47, NNP47, Nucleolar GTP-binding protein 3, Nucleostemin, GNL3, E2IG3, NS
Target/Specificity	This Nucleostemin (GNL3) antibody is generated from rabbits immunized with a KLH conjugated synthetic peptide between 458-487 amino acids from the C-terminal region of human Nucleostemin (GNL3).
Dilution	WB~~1:1000 IHC-P~~1:100~500 E~~Use at an assay dependent concentration.
Format	Purified polyclonal antibody supplied in PBS with 0.09% (W/V) sodium azide. This antibody is prepared by Saturated Ammonium Sulfate (SAS) precipitation followed by dialysis against PBS.
Storage	Maintain refrigerated at 2-8°C for up to 2 weeks. For long term storage store at -20°C in small aliquots to prevent freeze-thaw cycles.
Precautions	Nucleostemin (GNL3) Antibody (C-term) is for research use only and not for use in diagnostic or therapeutic procedures.

Protein Information

Name	GNL3
Synonyms	E2IG3, NS
Function	May be required to maintain the proliferative capacity of stem cells.

Stabilizes MDM2 by preventing its ubiquitination, and hence proteasomal degradation (By similarity).

Cellular Location

Nucleus {ECO:0000250|UniProtKB:Q811S9}. Nucleus, nucleolus.
Note=Shuttles between the nucleus and nucleolus.
{ECO:0000250|UniProtKB:Q811S9}

Tissue Location

Increased levels in lung tissue in cancer patients.

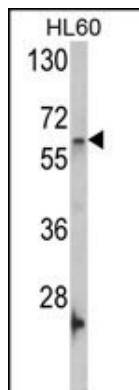
Background

GNL3 is found in the nucleoli of embryonic stem cells, adult CNS stem cells, primitive cells in the bone marrow and cancer cells. It is not in the differentiated cells of most adult tissues. It has been suggested to play a role in controlling the cell-cycle progression in stem cells and cancer cells, and may be required to maintain the proliferative capacity of stem cells.

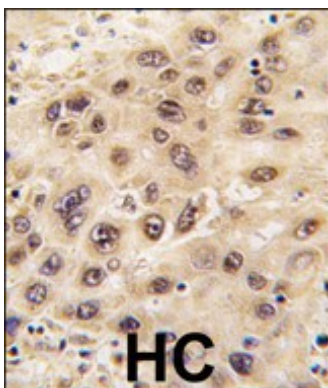
References

Ma,H.,Mol. Biol. Cell 18 (7), 2630-2635 (2007)

Images



Western blot analysis of GNL3 Antibody (C-term) (Cat. #AP1405b) in HL60 cell line lysates (35ug/lane). GNL3 (arrow) was detected using the purified Pab.



Formalin-fixed and paraffin-embedded human hepatocarcinoma tissue reacted with GNL3 antibody (C-term), which was peroxidase-conjugated to the secondary antibody, followed by DAB staining. This data demonstrates the use of this antibody for immunohistochemistry; clinical relevance has not been evaluated.

Please note: All products are 'FOR RESEARCH USE ONLY. NOT FOR USE IN DIAGNOSTIC OR THERAPEUTIC PROCEDURES'.