

## SYT5 Antibody (Center)

Affinity Purified Rabbit Polyclonal Antibody (Pab)

Catalog # AP14064c

### Product Information

---

<b>Application</b>	WB, E
<b>Primary Accession</b>	<a href="#">O00445</a>
<b>Other Accession</b>	<a href="#">NP_003171.2</a>
<b>Reactivity</b>	Human
<b>Host</b>	Rabbit
<b>Clonality</b>	Polyclonal
<b>Isotype</b>	Rabbit IgG
<b>Clone Names</b>	RB34153
<b>Calculated MW</b>	42900
<b>Antigen Region</b>	138-167

### Additional Information

---

<b>Gene ID</b>	6861
<b>Other Names</b>	Synaptotagmin-5, Synaptotagmin V, SytV, SYT5
<b>Target/Specificity</b>	This SYT5 antibody is generated from rabbits immunized with a KLH conjugated synthetic peptide between 138-167 amino acids from the Central region of human SYT5.
<b>Dilution</b>	WB~~1:1000 E~~Use at an assay dependent concentration.
<b>Format</b>	Purified polyclonal antibody supplied in PBS with 0.09% (W/V) sodium azide. This antibody is purified through a protein A column, followed by peptide affinity purification.
<b>Storage</b>	Maintain refrigerated at 2-8°C for up to 2 weeks. For long term storage store at -20°C in small aliquots to prevent freeze-thaw cycles.
<b>Precautions</b>	SYT5 Antibody (Center) is for research use only and not for use in diagnostic or therapeutic procedures.

### Protein Information

---

<b>Name</b>	SYT5
<b>Function</b>	May be involved in Ca(2+)-dependent exocytosis of secretory vesicles through Ca(2+) and phospholipid binding to the C2 domain or may serve as Ca(2+) sensors in the process of vesicular trafficking and exocytosis. Regulates the Ca(2+)-dependent secretion of norepinephrine in PC12 cells. Required for

export from the endocytic recycling compartment to the cell surface (By similarity).

#### Cellular Location

Cytoplasmic vesicle, secretory vesicle, synaptic vesicle membrane; Single-pass membrane protein. Recycling endosome membrane; Single-pass membrane protein. Note=In mast cells, localizes to the endocytic recycling compartment.

## Background

---

SYT5 may be involved in Ca(2+)-dependent exocytosis of secretory vesicles through Ca(2+) and phospholipid binding to the C2 domain or may serve as Ca(2+) sensors in the process of vesicular trafficking and exocytosis. Regulates the Ca(2+)-dependent secretion of norepinephrine in PC12 cells. Required for export from the endocytic recycling compartment to the cell surface (By similarity).

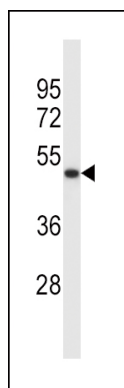
## References

---

Martins-de-Souza, D., et al. J Psychiatr Res (2010) In press :  
Sreenath, A.S., et al. Clin. Biochem. 38(5):436-443(2005)  
Mizutani, A., et al. J. Biol. Chem. 275(13):9823-9831(2000)  
Craxton, M., et al. FEBS Lett. 460(3):417-422(1999)  
Fukuda, M., et al. J. Biol. Chem. 274(44):31421-31427(1999)

## Images

---



SYT5 Antibody (Center) (Cat. #AP14064c) western blot analysis in K562 cell line lysates (35ug/lane). This demonstrates the SYT5 antibody detected the SYT5 protein (arrow).

Please note: All products are 'FOR RESEARCH USE ONLY. NOT FOR USE IN DIAGNOSTIC OR THERAPEUTIC PROCEDURES'.