

BBC3 Antibody (Center)

Affinity Purified Rabbit Polyclonal Antibody (Pab)

Catalog # AP14100c

Product Information

Application	WB, IHC-P, E
Primary Accession	Q9BXH1
Other Accession	NP_055232.1 , NP_001120714.1 , NP_001120713.1
Reactivity	Human
Host	Rabbit
Clonality	Polyclonal
Isotype	Rabbit IgG
Clone Names	RB33714
Calculated MW	20532
Antigen Region	109-137

Additional Information

Gene ID	27113
Other Names	Bcl-2-binding component 3, JFY-1, p53 up-regulated modulator of apoptosis, BBC3, PUMA
Target/Specificity	This BBC3 antibody is generated from rabbits immunized with a KLH conjugated synthetic peptide between 109-137 amino acids from the Central region of human BBC3.
Dilution	WB~~1:1000 IHC-P~~1:100~500 E~~Use at an assay dependent concentration.
Format	Purified polyclonal antibody supplied in PBS with 0.09% (W/V) sodium azide. This antibody is purified through a protein A column, followed by peptide affinity purification.
Storage	Maintain refrigerated at 2-8°C for up to 2 weeks. For long term storage store at -20°C in small aliquots to prevent freeze-thaw cycles.
Precautions	BBC3 Antibody (Center) is for research use only and not for use in diagnostic or therapeutic procedures.

Protein Information

Name	BBC3
Synonyms	PUMA
Function	Essential mediator of p53/TP53-dependent and p53/TP53- independent

apoptosis (PubMed:[11463391](#), PubMed:[23340338](#)). Promotes partial unfolding of BCL2L1 and dissociation of BCL2L1 from p53/TP53, releasing the bound p53/TP53 to induce apoptosis (PubMed:[23340338](#)). Regulates ER stress-induced neuronal apoptosis (By similarity).

Cellular Location Mitochondrion Note=Localized to the mitochondria in order to induce cytochrome c release

Tissue Location Ubiquitously expressed.

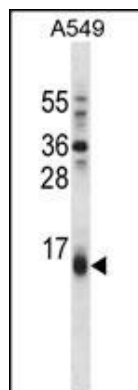
Background

BBC3 is an essential mediator of p53-dependent and p53-independent apoptosis.

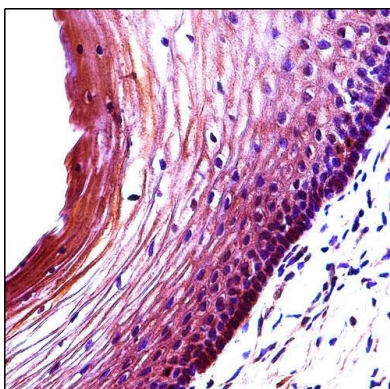
References

Cazanave, S.C., et al. Am. J. Physiol. Gastrointest. Liver Physiol. 299 (1), G236-G243 (2010) :
Gurzov, E.N., et al. J. Biol. Chem. 285(26):19910-19920(2010)
Hemmati, P.G., et al. J. Mol. Med. 88(6):609-622(2010)
Gomes, N.P., et al. Genes Dev. 24(10):1022-1034(2010)
Liu, F.T., et al. Biochem. Biophys. Res. Commun. 310(3):956-962(2003)

Images



BBC3 Antibody (Center) (Cat. #AP14100c) western blot analysis in A549 cell line lysates (35ug/lane). This demonstrates the BBC3 antibody detected the BBC3 protein (arrow).



BBC3 Antibody (Center) (Cat. #AP14100c) immunohistochemistry analysis in formalin fixed and paraffin embedded human cervix tissue followed by peroxidase conjugation of the secondary antibody and DAB staining. This data demonstrates the use of BBC3 Antibody (Center) for immunohistochemistry. Clinical relevance has not been evaluated.

Please note: All products are 'FOR RESEARCH USE ONLY. NOT FOR USE IN DIAGNOSTIC OR THERAPEUTIC PROCEDURES'.